

Steelcase Upholstery

| | |
|--|--|
| Price Group 1 Buzz2 Era Link | Leather CafeLeather Elmsoft |
| Price Group 2 Chainmail Cogent: Connect Dovetail by Designtex Foundation Intersection SoftNext Stand In New Black | |
| Price Group 3 Billard Multi-Use Gaja Redeem Retrieve | |
| Price Group 5 BoPeep Remix Silk | |
| Price Group 6 Brisa | |
| Price Group 7 Steelcase Trio | |

Buzz2

Buzz2 is timeless in design and construction. This material is characterized by small geometric pattern giving it that added texture. This collection has a multitude of solid color offerings on seating and vertical surface products.

Disclaimer

There may be variation in color, texture, and finish between this sample and the actual product.

Buzz2



Dunegrass 5G50



Pumpkin 5G55



Tomato 5F03



Rouge 5G57



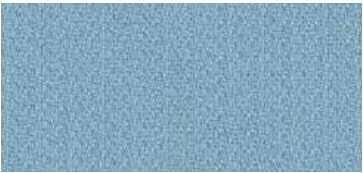
Burgundy 5F05



Crocus 5G63



Cyan 5G61



Atlantic 5G62



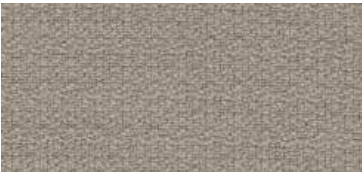
Blue 5F07



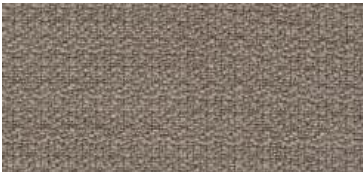
Navy 5F08



Meadow 5G59



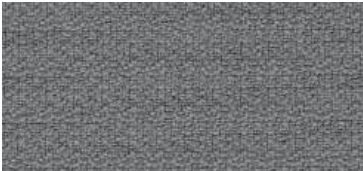
Sable 5G51



Stone 5F15



Alpine 5G64



Grey 5F16



Tornado 5G65



Black 5F17

Buzz2

Price Group 1, Coalesse 6

Technical Specifications

Contents: 100% Polyester (Antimony Free Yarn) | **Abrasion:** 100,000 double rubs | **Taber Abrasion:** 900 cycles

Material Characteristics

Width: 54 in | **Vertical Repeat:** None | **Horizontal Repeat:** None | **Backing:** None

Cleaning Code: WS | **Warranty:** 12 years

Performance Standards



| | Americas Finish Code | Europe, Middle East and Africa Finish Code | Asia Pacific Finish Code |
|-----------|-------------------------|--|-----------------------------|
| Tomato | 5F03 | – | – |
| Burgundy | 5F05 | – | 5F05 |
| Blue | 5F07 | – | 5F07 |
| Navy | 5F08 | – | 5F08 |
| Stone | 5F15 | – | 5F15 |
| Grey | 5F16 | – | – |
| Black | 5F17 | – | – |
| Dunegrass | 5G50 | – | – |
| Sable | 5G51 | – | 5G51 |
| Pumpkin | 5G55 | – | 5G55 |
| Rouge | 5G57 | – | 5G57 |
| Meadow | 5G59 | – | 5G59 |
| Cyan | 5G61 | – | – |
| Atlantic | 5G62 | – | – |
| Crocus | 5G63 | – | – |
| Alpine | 5G64 | – | 5G64 |
| Tornado | 5G65 | – | 5G65 |

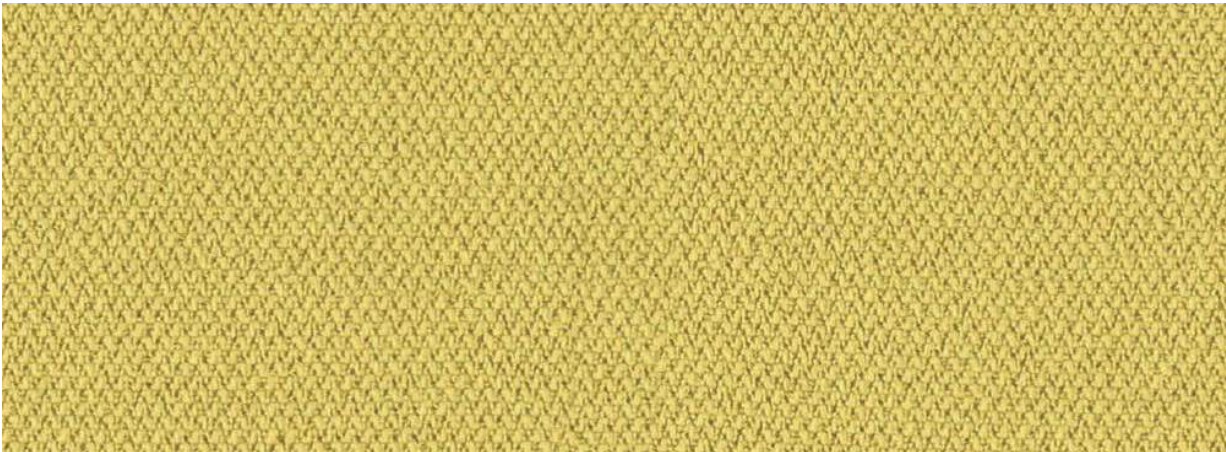
Era

Era features a small herringbone weave in a range of playful brights and sophisticated neutrals. Era pairs well with lounge products and enhances task chairs.

Disclaimer

There may be variation in color, texture, and finish between this sample and the actual product.

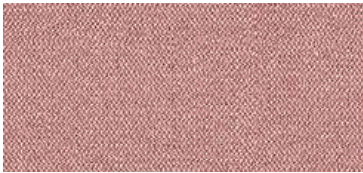
Item #21-0000443 01/22 ©2022 Steelcase Inc. All rights reserved. All specifications subject to change without notice. Trademarks used herein are the property of Steelcase Inc. or of their respective owners. Printed in U.S.A.



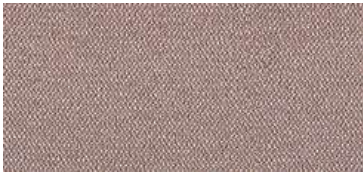
Canary 5ER4



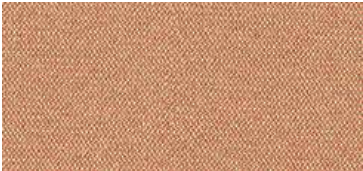
Comet 5ER5



Pink Lemonade 5ER8



Lentil 5ES1



Persimmon 5ES3



Rose Quartz 5ET1



Saffron 5ER7



Scarlet 5ES0



Blue Mint 5ES5



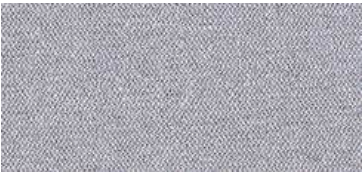
Cobalt 5ER0



Harbor 5ER1



Electric Indigo 5EU2



Blue Nickel 5ER2



Royal Blue 5ES6



Green Citrine 5EU3



Pistachio 5ER3



Olivine 5ET3



Sprout 5ES4



Oatmeal 5ES2



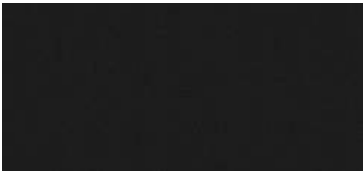
Truffle 5ER6



Night Owl 5ES7



Storm Cloud 5EU4



Onyx 5ER9

Era

Price Group 1, Coalesse 6

Technical Specifications

Contents: 100% Polyester (Antimony Free Yarn) | **Abrasion:** 100,000 double rubs

Material Characteristics

Width: 54 in | **Vertical Repeat:** None | **Horizontal Repeat:** None | **Backing:** None

Cleaning Code: WS | **Warranty:** 12 years

Performance Standards



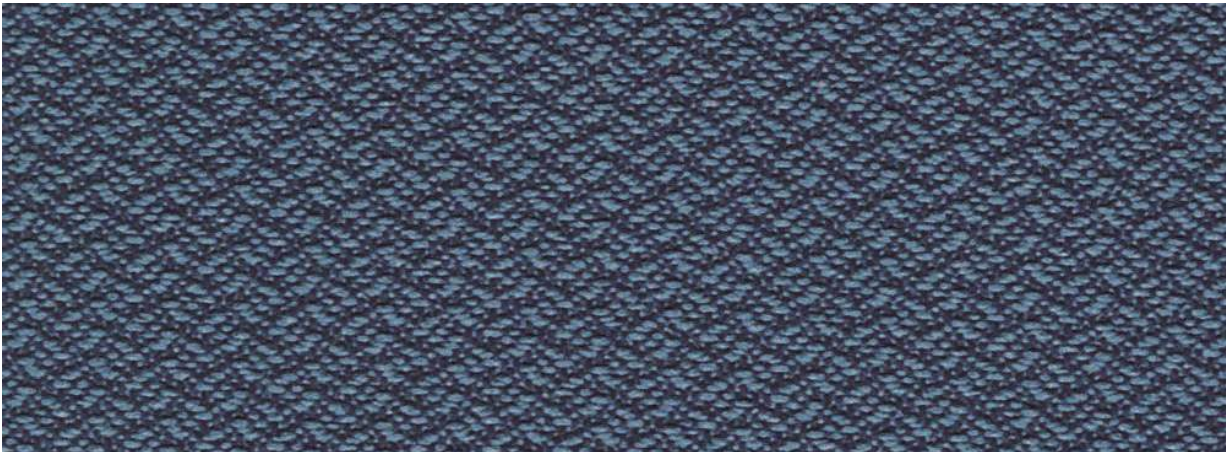
| | Americas Finish Code | Europe, Middle East and Africa Finish Code | Asia Pacific Finish Code | Camira Color |
|-----------------|-------------------------|--|-----------------------------|--------------|
| Cobalt | 5ER0 | CSE42 (5ER0) | 5ER0 | CSE42 |
| Harbor | 5ER1 | CSE15 (5ER1) | – | CSE15 |
| Blue Nickel | 5ER2 | CSE39 (5ER2) | 5ER2 | CSE39 |
| Pistachio | 5ER3 | CSE16 (5ER3) | 5ER3 | CSE16 |
| Canary | 5ER4 | CSE03 (5ER4) | – | CSE03 |
| Comet | 5ER5 | CSE41 (5ER5) | – | CSE41 |
| Truffle | 5ER6 | CSE02 (5ER6) | 5ER6 | CSE02 |
| Saffron | 5ER7 | CSE29 (5ER7) | 5ER7 | CSE29 |
| Pink Lemonade | 5ER8 | CSE24 (5ER8) | 5ER8 | CSE24 |
| Onyx | 5ER9 | CSE14 (5ER9) | 5ER9 | CSE14 |
| Scarlet | 5ES0 | CSE28 (5ES0) | 5ES0 | CSE28 |
| Lentil | 5ES1 | CSE23 (5ES1) | – | CSE23 |
| Oatmeal | 5ES2 | CSE01 (5ES2) | – | CSE01 |
| Persimmon | 5ES3 | CSE25 (5ES3) | 5ES3 | CSE25 |
| Sprout | 5ES4 | CSE34 (5ES4) | 5ES4 | CSE34 |
| Blue Mint | 5ES5 | CSE20 (5ES5) | 5ES5 | CSE20 |
| Royal Blue | 5ES6 | CSE40 (5ES6) | – | CSE40 |
| Night Owl | 5ES7 | CSE13 (5ES7) | 5ES7 | CSE13 |
| Rose Quartz | 5ET1 | CSE26 | 5ET1 | CSE26 |
| Olivine | 5ET3 | CSE33 | 5ET3 | CSE33 |
| Electric Indigo | 5EU2 | CSE54 | 5EU2 | CSE54 |
| Green Citrine | 5EU3 | CSE07 | 5EU3 | CSE07 |
| Storm Cloud | 5EU4 | CSE43 | 5EU4 | CSE43 |

Link

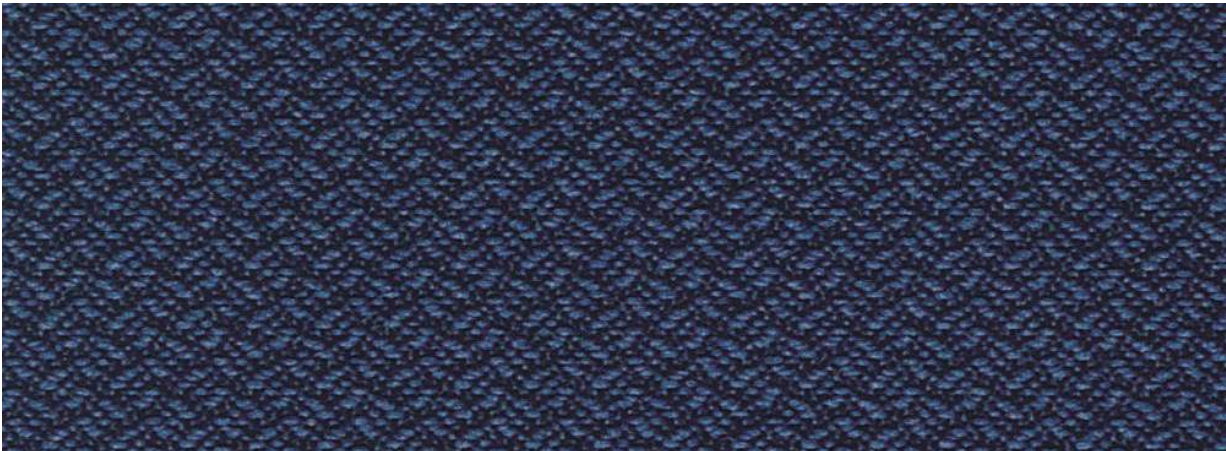
Link is offered on a variety of seating products. It features a small geometric pattern and muted color palette that helps creates a cohesive space.

Disclaimer

There may be variation in color, texture, and finish between this sample and the actual product.



Blue 5A24



Navy 5A25



Black 5A27

Link

Price Group 1, Coalesse 6

Technical Specifications

Contents: 100% Polyester | **Abrasion:** 55,000 double rubs

Material Characteristics

Width: 54 in | **Vertical Repeat:** 0.19 in | **Horizontal Repeat:** 0.25 in | **Backing:** Polyester

Cleaning Code: WS | **Warranty:** 5 years

Performance Standards



| | Americas Finish Code | Europe, Middle East and Africa Finish Code | Asia Pacific Finish Code |
|-------|-------------------------|--|-----------------------------|
| Blue | 5A24 | – | – |
| Navy | 5A25 | – | – |
| Black | 5A27 | – | – |

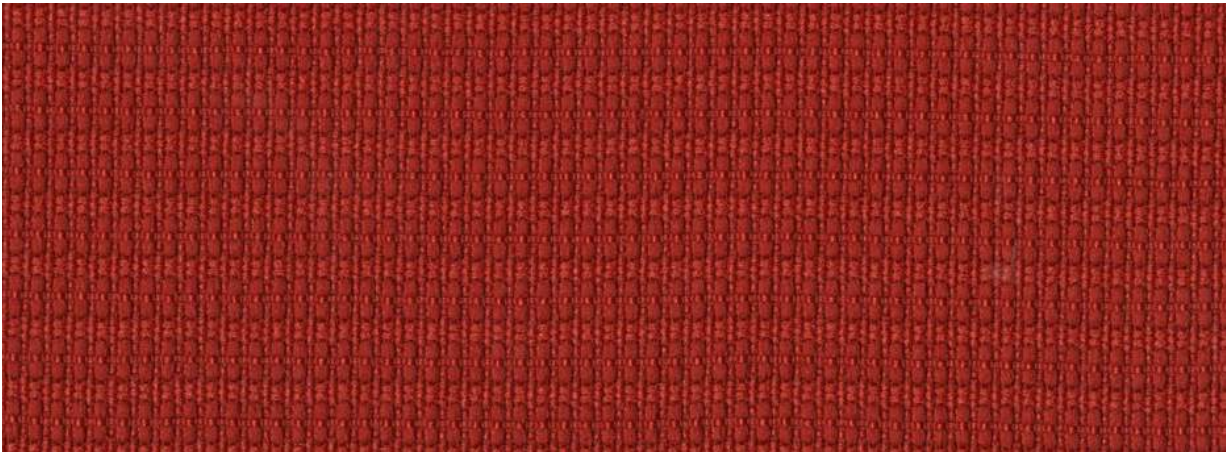
Chainmail

Chainmail is a bleach cleanable material with a small solid geometric weave that provides a unique texture across a multitude of seating products. The playful color palette is sure to bring life and harmony to any space.

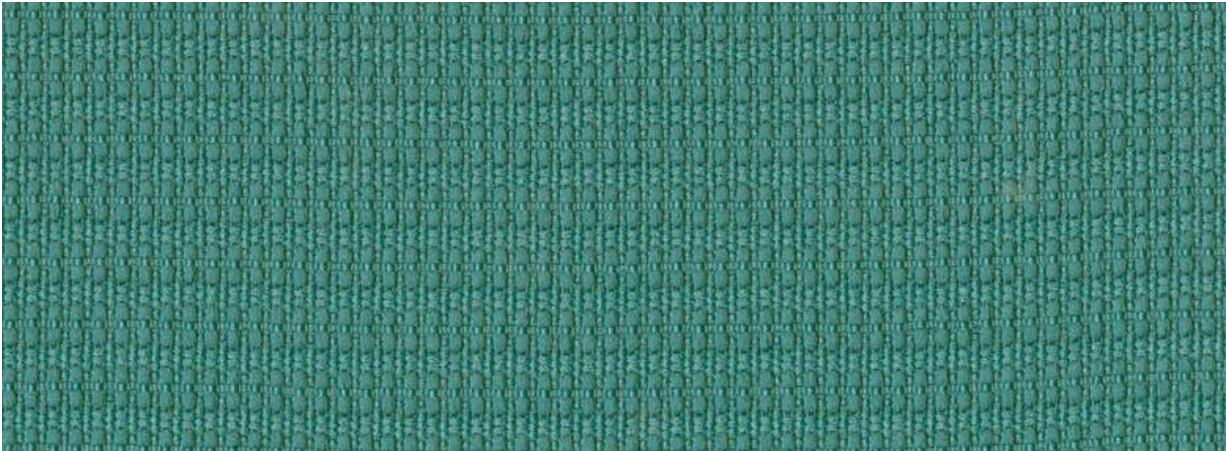
Disclaimer

There may be variation in color, texture, and finish between this sample and the actual product.

Chainmail



Tricycle 5555



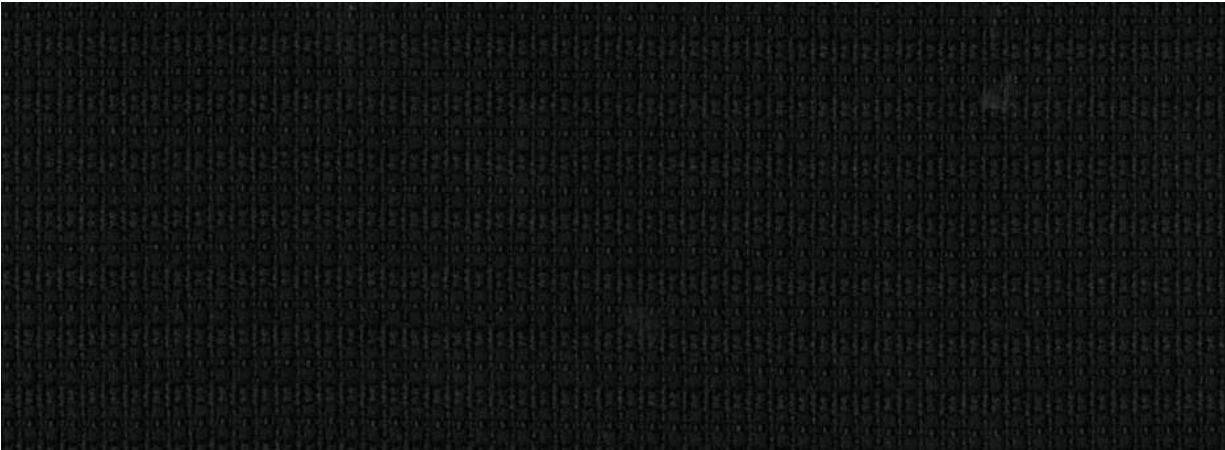
Lagoon 5559



Silver Dollar 5552



Space 5551



Volcano 5553

Chainmail

Price Group 2, Coalesse 7

Technical Specifications

Contents: 100% Post-Consumer Recycled Polyester | **Abrasion:** 100,000 double rubs

Material Characteristics

Width: 54 in | **Vertical Repeat:** 0.13 in | **Horizontal Repeat:** 0.25 in | **Backing:** None

Cleaning Code: WS | **Warranty:** 12 years

Bleach Cleanable

Performance Standards



| | Americas Finish Code | Europe, Middle East and Africa Finish Code | Asia Pacific Finish Code |
|---------------|-------------------------|--|-----------------------------|
| Space | 5551 | – | – |
| Silver Dollar | 5552 | – | – |
| Volcano | 5553 | – | – |
| Tricycle | 5555 | – | – |
| Lagoon | 5559 | – | – |

Cogent: Connect

Cogent: Connect creates cohesive color schemes when paired with knit and mesh options. It is a hardworking polyester material available across seating products with a broad range of solid color options.

Disclaimer

There may be variation in color, texture, and finish between this sample and the actual product.

Cogent: Connect



Green Citrine 5SD5



Turmeric/Honey 5S16



Tangerine 5S17



Saffron 5SD4



Scarlet 5S18



Lipstick/Merlot 5S99



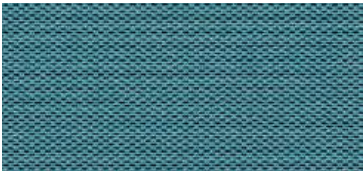
Rose Quartz 5SD6



Concord 5S19



Aubergine 5SD1



Lagoon 5SD3



Blue Jay 5S21



Royal Blue 5SD0



Sea Salt 5SD7



Storm Cloud 5SF3



Indigo/Blueprint 5S93



Olivine 5SF4



Lizard/Jungle 5S94



Wasabi 5S23



Peacock 5SD2



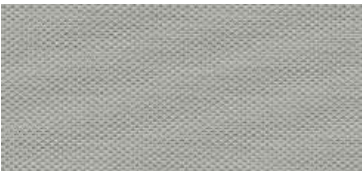
Malt 5S27



Quicksilver 5S96



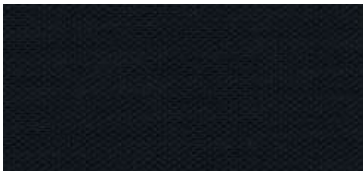
Root Beer 5S28



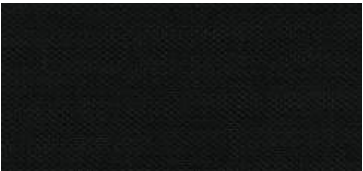
Nickel 5S24



Graphite 5S25



Sailor 5S95



Licorice 5S26



Coconut 5S15

Cogent: Connect

Price Group 2, Coalesse 7

Technical Specifications

Contents: 100% Polyester (Antimony Free Yarn) | **Abrasion:** 100,000 double rubs

Material Characteristics

Width: 62 in | **Vertical Repeat:** None | **Horizontal Repeat:** None | **Backing:** None

Cleaning Code: WS | **Warranty:** 12 years

Performance Standards



| | Americas Finish Code | Europe, Middle East and Africa Finish Code | Asia Pacific Finish Code |
|------------------|-------------------------|--|-----------------------------|
| Coconut | 5S15 | AT14 | 5S15 |
| Turmeric/Honey | 5S16 | AT29 | 5S16 |
| Tangerine | 5S17 | AT19 | 5S17 |
| Scarlet | 5S18 | AT15 | 5S18 |
| Concord | 5S19 | AT23 | 5S19 |
| Blue Jay | 5S21 | AT16 | 5S21 |
| Wasabi | 5S23 | AT21 | 5S23 |
| Nickel | 5S24 | AT17 | 5S24 |
| Graphite | 5S25 | AT24 | 5S25 |
| Licorice | 5S26 | AT04 | 5S26 |
| Malt | 5S27 | AT20 | 5S27 |
| Root Beer | 5S28 | AT18 | 5S28 |
| Indigo/Blueprint | 5S93 | – | 5S93 |
| Lizard/Jungle | 5S94 | AT27 | 5S94 |
| Sailor | 5S95 | – | 5S95 |
| Quicksilver | 5S96 | – | 5S96 |
| Lipstick/Merlot | 5S99 | AT28 | 5S99 |
| Royal Blue | 5SD0 | AT08 | 5SD0 |
| Aubergine | 5SD1 | AT25 | 5SD1 |
| Peacock | 5SD2 | AT26 | 5SD2 |
| Lagoon | 5SD3 | AT30 | 5SD3 |
| Saffron | 5SD4 | AT31 | 5SD4 |
| Green Citrine | 5SD5 | – | 5SD5 |
| Rose Quartz | 5SD6 | – | 5SD6 |
| Sea Salt | 5SD7 | – | 5SD7 |
| Storm Cloud | 5SF3 | – | 5SF3 |
| Olivine | 5SF4 | – | 5SF4 |

Dovetail by Designtex

Dovetail by Designtex is a new textile collection that offers a soft color palette with a subtle heathered visual. The colors pair well with our paint portfolio, allowing for monochromatic design. Dovetail by Designtex can be used across a range of products including both seating and vertical applications.

Disclaimer

There may be variation in color, texture, and finish between this sample and the actual product.

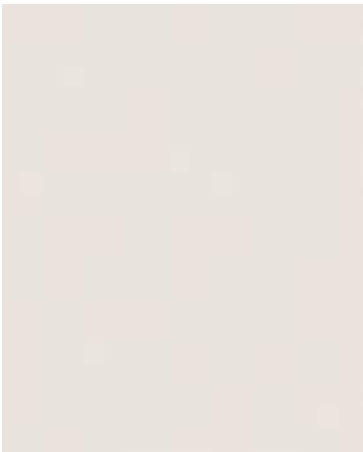
Dovetail by Designtex



Light Mocha 5H39



Pebble 5H40



Warm White 5H41



Sandstone 5H42



Honeycomb 5H43



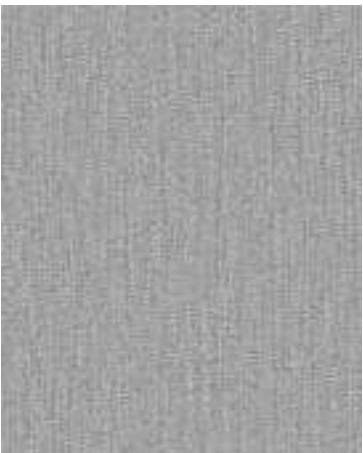
Terra 5H44



Honeydew 5H45



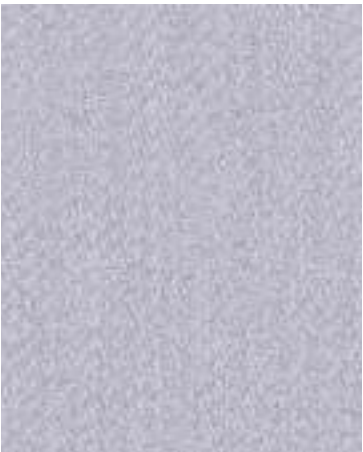
Denim 5H46



Storm 5H47



Ice Blue 5H48



Aura 5H49



Darkest Grey 5H50

Dovetail by Designtex

Price Group 2

Technical Specifications

Contents: 63% Post-Consumer Recycled Polyester, 37% Polyester

Abrasion: 60,000 Double Rubs | Faber Abrasion: 4,500 Cycles

Material Characteristics

Width: 56 in | Vertical Repeat: None | Horizontal Repeat: None | Backing: None

Cleaning Code: WS | Warranty: 12 years

Performance Standards



| | Americas Finish Code | Europe, Middle East and Africa Finish Code | Asia Pacific Finish Code |
|--------------|-------------------------|--|-----------------------------|
| Light Mocha | 5H39 | — | — |
| Pebble | 5H40 | — | — |
| Warm White | 5H41 | — | — |
| Sandstone | 5H42 | — | — |
| Honeycomb | 5H43 | — | — |
| Terra | 5H44 | — | — |
| Honeydew | 5H45 | — | — |
| Denim | 5H46 | — | — |
| Storm | 5H47 | — | — |
| Ice Blue | 5H48 | — | — |
| Aura | 5H49 | — | — |
| Darkest Grey | 5H50 | — | — |

Foundation

Foundation is a flame retardant (FR) free vinyl upholstery available across a range of seating products. This material has the same performance characteristics vinyl has always been able to provide.

Disclaimer

There may be variation in color, texture, and finish between this sample and the actual product.

Foundation



Honey 5885



Cranberry 5883



Navy 5876



Sailor 5878



Spring 5884



Oregano 5888



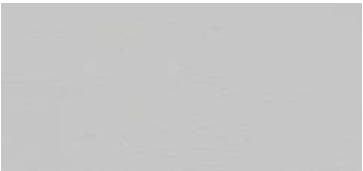
New Sand 5882



Pebble 5887



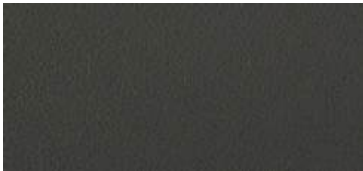
Peat 5881



Folkstone 5886



Foggy Night 5877



Seal 5880



Black 5875



Ivory 5879

Foundation

Price Group 2

Technical Specifications

Contents: 100% FR-free vinyl | **Abrasion:** 100,000+ double rubs

Material Characteristics

Width: 54 in | **Vertical Repeat:** None | **Horizontal Repeat:** None | **Backing:** Polyester

Cleaning Code: WS | **Warranty:** 12 years

Bleach Cleanable

Performance Standards



| | Americas Finish Code | Europe, Middle East and Africa Finish Code | Asia Pacific Finish Code | Nassimi Color |
|-------------|-------------------------|--|-----------------------------|---------------|
| Black | 5875 | – | – | PFO-008 |
| Navy | 5876 | – | – | PFO-013 |
| Foggy Night | 5877 | – | – | XFO-107 |
| Sailor | 5878 | – | – | XFO-110 |
| Ivory | 5879 | – | – | PFO-010 |
| Seal | 5880 | – | – | PFO-016 |
| Peat | 5881 | – | – | PFO-014 |
| New Sand | 5882 | – | – | PFO-003 |
| Cranberry | 5883 | – | – | PFO-006 |
| Spring | 5884 | – | – | PFO-017 |
| Honey | 5885 | – | – | PFO-018 |
| Folkstone | 5886 | – | – | XFO-104 |
| Pebble | 5887 | – | – | PFO-015 |
| Oregano | 5888 | – | – | PFO-012 |

Intersection

What you see is more than a fabric. It's part of a solution to the enormous problem of marine litter. Only 9% of plastic ever produced has been recycled. Most ends up in the world's oceans – more than 12 million tons each year. 9% is too small. That means we have a big opportunity.

Each yard of Intersection fabric removes up to 1/2 pound of marine waste. Steelcase co-created Intersection with Duvaltex, our long-time partner in creating sustainable materials: First, The Seaqual Initiative works with ocean clean-up programs to collect marine litter and turn it into Upcycled Marine Plastic, then into Seaqual® Yarn. Duvaltex weaves that yarn into Intersection fabric, using their proprietary Clean Impact Textiles™ technology.

Steelcase

Disclaimer

There may be variation in color, texture, and finish between this sample and the actual product.

Intersection



Chalk

P212



Summit

P211



Lace

P213

Intersection

Price Group 2

Technical Specifications

Contents: 50% Seagul Post-Consumer Recycled Polyester, 20% Post-Consumer Recycled Polyester, 30% Virgin Polyester

Abrasion: 500 cycles

Material Characteristics

Width: 66 in | **Vertical Repeat:** 8.75 in | **Horizontal Repeat:** 12.4 in | **Backing:** None

Cleaning Code: WS | **Warranty:** 12 years

Performance Standards



| | Americas Finish Code | Europe, Middle East and Africa Finish Code | Asia Pacific Finish Code |
|--------|-------------------------|--|-----------------------------|
| Summit | P211 | – | – |
| Chalk | P212 | – | – |
| Lace | P213 | – | – |

Stand In

Stand In is a bleach cleanable fabric, available across countless seating products. The muted color palette softens the tone in any room.

Steelcase

Disclaimer

There may be variation in color, texture, and finish between this sample and the actual product.

Item #21-0000457 02/24 ©2022 Steelcase Inc. All rights reserved. All specifications subject to change without notice. Trademarks used herein are the property of Steelcase Inc. or of their respective owners. Printed in U.S.A.

Stand In



Plantain 5633



Mango 5746



Allspice 5629



Sedona 5747



Apple 5630



Lava 5631



Cayenne 5632



Juniper 5748



Atlantis 5636



Blueberry 5744



Orca 5691



Chartreuse

5745



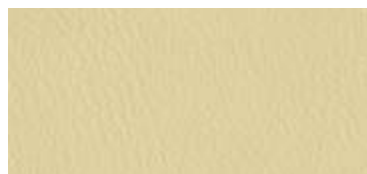
Parsley

5634



Scallion

5635



Chardonnay

5626



Peanut

5749



Graham

5627



Putty

5743



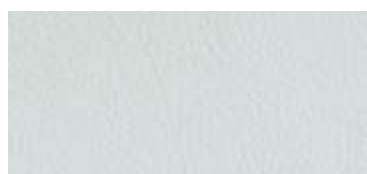
Burlap

5740



Porter

5741



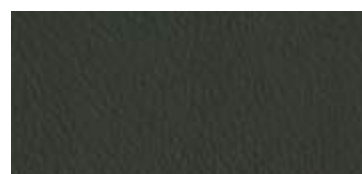
Sleet

5621



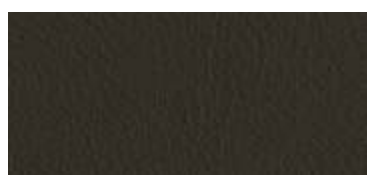
Lunar

5622



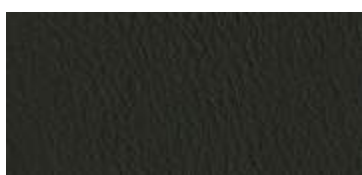
Cyclone

5623



Sediment

5628



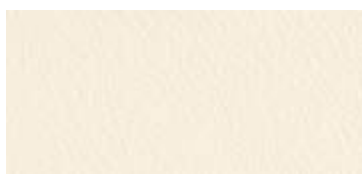
Eclipse

5624



Tusk

5742



Powder

5625

Stand In

Price Group 2, Coalesse 7

Technical Specifications

Contents: 100% Polyurethane | **Abrasion:** 150,000 double rubs

Material Characteristics

Width: 54 in | **Vertical Repeat:** None | **Horizontal Repeat:** None | **Backing:** Polyester-Cotton Blend

Cleaning Code: WS | **Warranty:** 12 years

Bleach Cleanable

Performance Standards



| | Americas Finish Code | Europe, Middle East and Africa Finish Code | Asia Pacific Finish Code |
|------------|-------------------------|--|-----------------------------|
| Sleet | 5621 | – | – |
| Lunar | 5622 | – | – |
| Cyclone | 5623 | – | – |
| Eclipse | 5624 | – | – |
| Powder | 5625 | – | – |
| Chardonnay | 5626 | – | – |
| Graham | 5627 | – | – |
| Sediment | 5628 | – | – |
| Allspice | 5629 | – | – |
| Apple | 5630 | – | – |
| Lava | 5631 | – | – |
| Cayenne | 5632 | – | – |
| Plantain | 5633 | – | – |
| Parsley | 5634 | – | – |
| Scallion | 5635 | – | – |
| Atlantis | 5636 | – | – |
| Orca | 5691 | – | – |
| Burlap | 5740 | – | – |
| Porter | 5741 | – | – |
| Tusk | 5742 | – | – |
| Putty | 5743 | – | – |
| Blueberry | 5744 | – | – |
| Chartreuse | 5745 | – | – |
| Mango | 5746 | – | – |
| Sedona | 5747 | – | – |
| Juniper | 5748 | – | – |
| Peanut | 5749 | – | – |

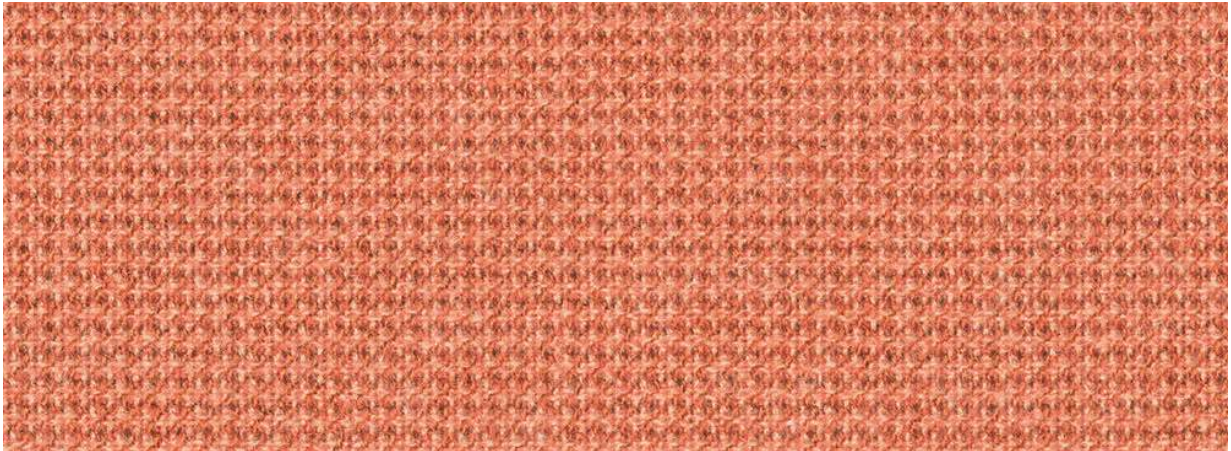
Softnext

SoftNext is 100% post-consumer recycled polyester. This textile can be used across a range of products including both seating and vertical applications. SoftNext is a new textile that is both visually soft and soft to the touch. It provides subtle color mixing with a beautiful heathered texture and matte finish.

Disclaimer

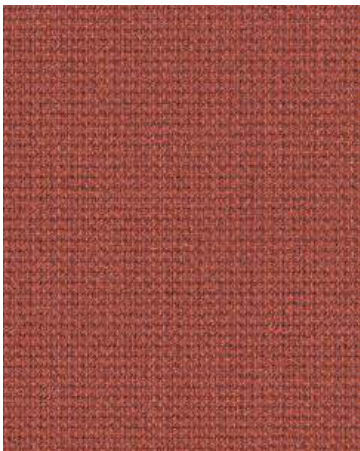
There may be variation in color, texture, and finish between this sample and the actual product.

Softnext



Cinnabar
V13 S2 WB

5H38



Burnt Umber
V14 S2 WI

5H37



Blue Mica
V14 S7 WN

5H35



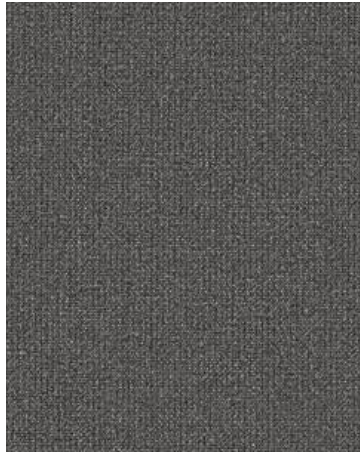
Midnight
V15 S4 WR

5H34



Jade
V11

5H36



Foggy Night
V15 S7 WU

5H28



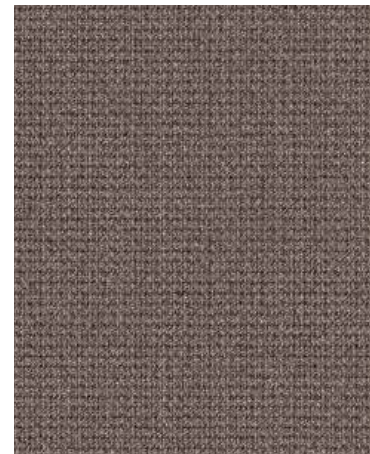
Clay
V16 S6 WAB

5H31



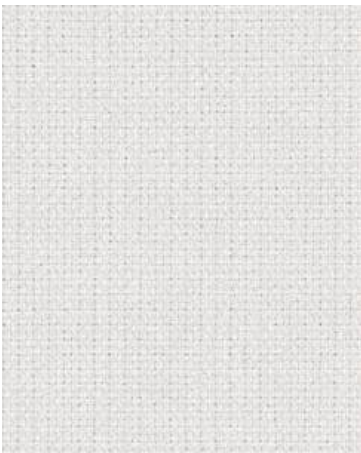
Sandstone
V16 S5 WAA

5H32



Mocha
V16 S8 WAD

5H30



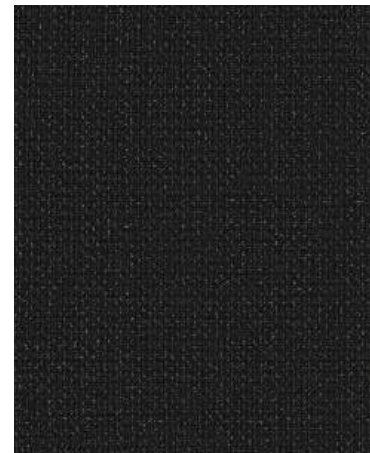
Chalk
V16 S1 WW

5H33



Greystone
V16 S4 WZ

5H29



Obsidian
V15 S6 WT

5H27

Softnext

Price Group 2

Technical Specifications
Contents: 100% Total Recycled Content; 100% Post-Consumer Recycled Polyester
Abrasion: 60,000 Double Rubs | Faber Abrasion: 1,600 Cycles

Material Characteristics
Width: 55 in | Vertical Repeat: None | Horizontal Repeat: None | Backing: None
Cleaning Code: WS | Warranty: 12 years

Performance Standards
   

| | Americas Finish Code | Europe, Middle East and Africa Finish Code | Asia Pacific Finish Code |
|-------------|-------------------------|--|-----------------------------|
| Obsidian | 5H27 | – | – |
| Foggy Night | 5H28 | – | – |
| Greystone | 5H29 | – | – |
| Mocha | 5H30 | – | – |
| Clay | 5H31 | – | – |
| Sandstone | 5H32 | – | – |
| Chalk | 5H33 | – | – |
| Midnight | 5H34 | – | – |
| Blue Mica | 5H35 | – | – |
| Jade | 5H36 | – | – |
| Burnt Umber | 5H37 | – | – |
| Cinnabar | 5H38 | – | – |

New Black

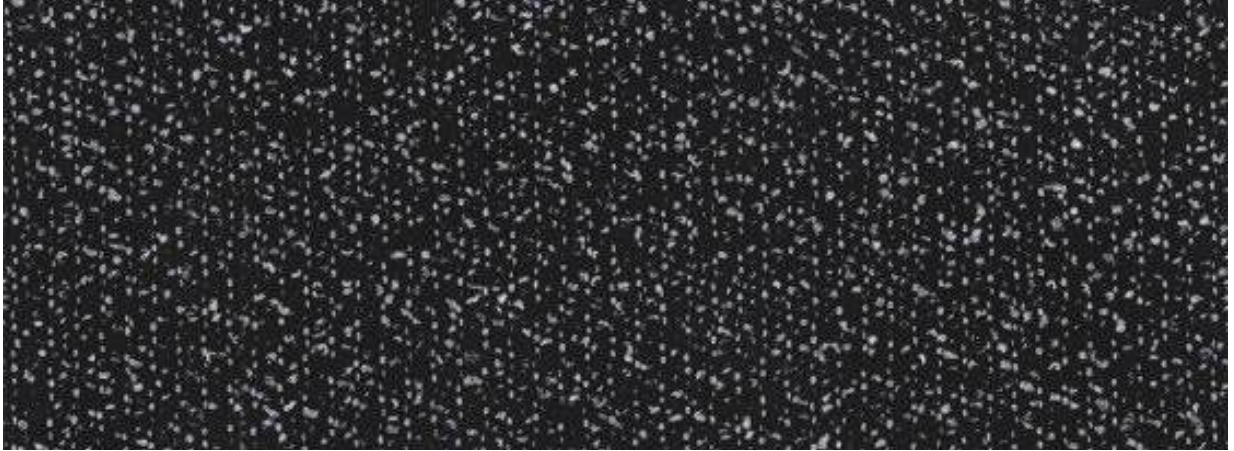
With black as the most specified color for seating, these five patterns give more beauty and choice to our black upholstery options. The patterns are beautiful on their own or as a collection, and also create a powerful story when paired together with other surface materials in various colors, textures and patterns.

To create these textiles, panel fabric scraps from the Steelcase production process are re-spun into black thread. Paired with the white recycled polyester thread, New Black is made of 100% recycled material and powers a strong circular economy story.

Disclaimer

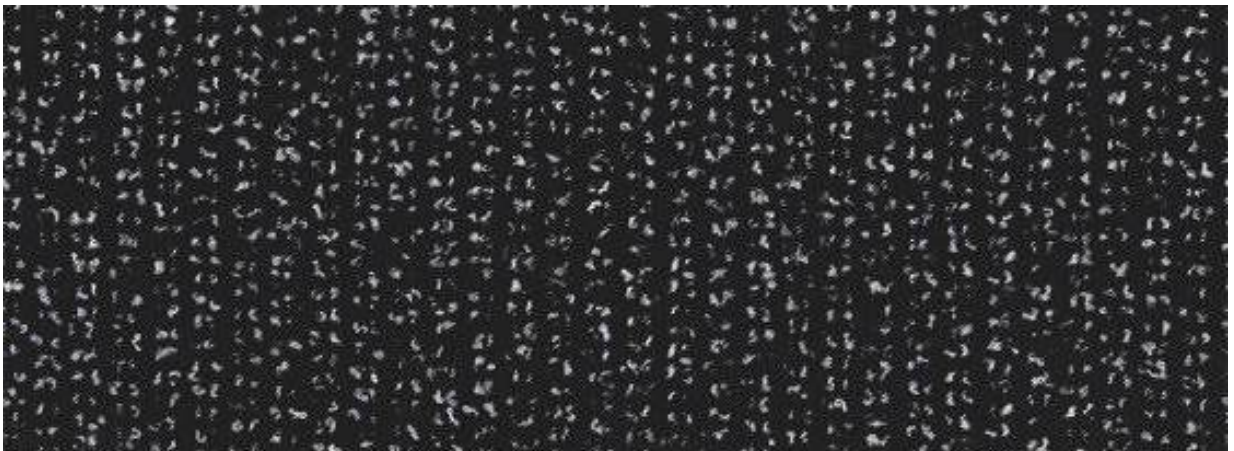
There may be variation in color, texture, and finish between this sample and the actual product.

New Black



Jack

5J08



Harley

5J12



Bruce

5J10



Henry

5J11



James

5J09

New Black

Technical Specifications

Contents: 100% Post-Consumer Recycled Polyester | **Abrasion:** 100,000 double rubs

Material Characteristics

Width: 56 in | **Backing:** None | **Cleaning Code:** WS | **Warranty:** 12 years

Bleach Cleanable

Performance Standards



New Black: Bruce

Price Group 1, Coalesse 9

Vertical Repeat: 0.03 in
Horizontal Repeat: 0.1 in

New Black: Henry

Price Group 1, Coalesse 9

Vertical Repeat: 0.02 in
Horizontal Repeat: 0.02 in

New Black: Jack

Price Group 2, Coalesse 7

Vertical Repeat: 0.4 in
Horizontal Repeat: 0.06 in

New Black: James

Price Group 2, Coalesse 7

Vertical Repeat: 0.02 in
Horizontal Repeat: 0.01 in

New Black: Harley

Price Group 2, Coalesse 7

Vertical Repeat: 0.03 in
Horizontal Repeat: 0.01 in

| | Americas Finish Code | Europe, Middle East and Africa Finish Code | Asia Pacific Finish Code |
|--------|-------------------------|--|-----------------------------|
| Jack | 5J08 | – | 5J08 |
| James | 5J09 | – | 5J09 |
| Bruce | 5J10 | – | 5J10 |
| Henry | 5J11 | – | 5J11 |
| Harley | 5J12 | – | 5J12 |

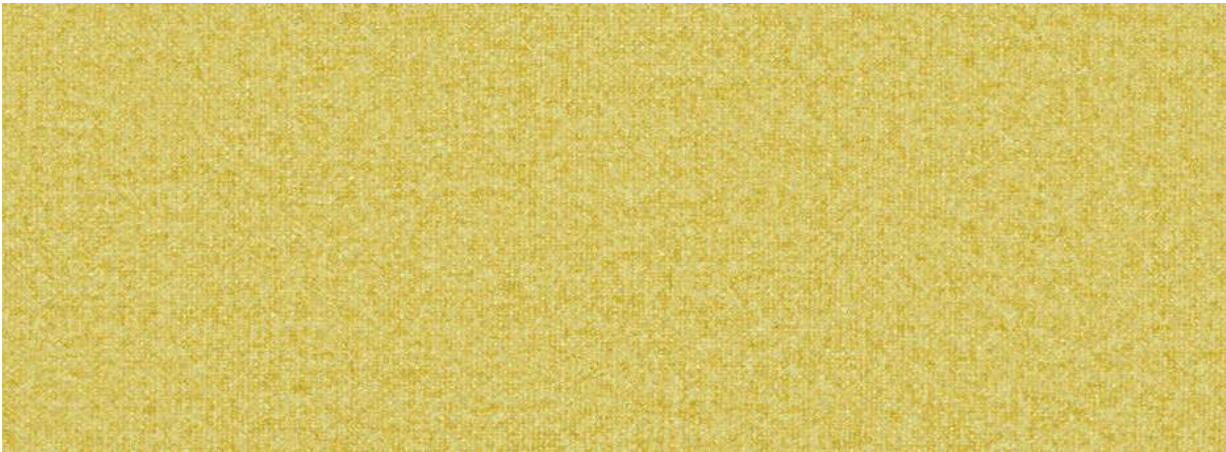
Billiard Multi-Use

Billiard Multi-Use fabric is a woven polyester with a soft felt-like texture. This material brings versatility to a wide range of seating and vertical surface products. This collection has an array of sophisticated neutrals and accent colors.

Disclaimer

There may be variation in color, texture, and finish between this sample and the actual product.

Billiard Multi-Use



Citrine/Citron 5H13



Tangelo 5H12



Rose Quartz 5H23



Poppy 5H11



Mallard 5H17



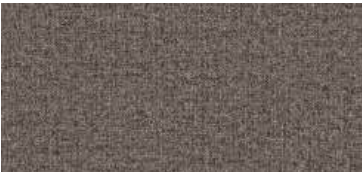
Indigo 5H16



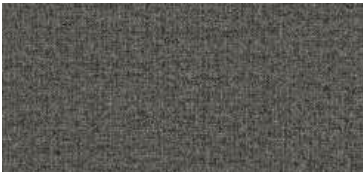
Avocado 5H14



Olivine 5H26



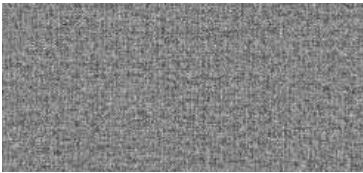
Teak 5H18



Gunmetal 5H21



Sea Salt 5H24



Pewter 5H20



Storm Cloud 5H25



Ink 5H22



Cumulus 5H19

Billiard Multi-Use

Price Group 3, Coalesse 8

Technical Specifications

Contents: 100% Polyester | **Abrasion:** 60,000 double rubs | **Taber Abrasion:** 2,500 cycles

Material Characteristics

Width: 54 in | **Vertical Repeat:** None | **Horizontal Repeat:** None | **Backing:** None

Cleaning Code: WS | **Warranty:** 12 years

Performance Standards



| | Americas Finish Code | Europe, Middle East and Africa Finish Code | Asia Pacific Finish Code | Designtex Color |
|----------------|-------------------------|--|-----------------------------|-----------------|
| Poppy | 5H11 | – | – | 4116-301 |
| Tangelo | 5H12 | – | – | 4116-701 |
| Citrine/Citron | 5H13 | – | – | 4116-501 |
| Avocado | 5H14 | – | – | 4116-502 |
| Indigo | 5H16 | – | – | 4116-402 |
| Mallard | 5H17 | – | – | 4116-401 |
| Teak | 5H18 | – | – | 4116-103 |
| Cumulus | 5H19 | – | – | 4116-803 |
| Pewter | 5H20 | – | – | 4116-804 |
| Gunmetal | 5H21 | – | – | 4116-805 |
| Ink | 5H22 | – | – | 4116-806 |
| Rose Quartz | 5H23 | – | – | 4116-303 |
| Sea Salt | 5H24 | – | – | 4116-403 |
| Storm Cloud | 5H25 | – | – | 4116-807 |
| Olivine | 5H26 | – | – | 4116-504 |

Gaja

Gaja is available across a robust portfolio of seating products. This crepe wool comes in a range of soft neutrals to muted tones.

Steelcase

Disclaimer

There may be variation in color, texture, and finish between this sample and the actual product.

Item #21-0000445 2/24 ©2012 Steelcase Inc. All rights reserved. All specifications subject to change without notice. Trademarks used herein are the property of Steelcase Inc. or of their respective owners. Printed in U.S.A.



Camellia Red 5W51



Crimson 5W43



Chili Pepper 5W61



Maroon 5W56



Black Raspberry 5W57



Ink 5W44



Deep Blue 5W60



Night Blue 5W45



Emerald 5W52



Snow Pea 5W53



Olive 5W54



Sepia 5W48



Spruce 5W58



Pearl Grey 5W42



Pepper 5W41



Black 5W40

Gaja

Price Group 3, Coalesse 8

Technical Specifications

Contents: 100% Wool | **Abrasion:** 50,000 cycles Martindale

Material Characteristics

Width: 55 in | **Vertical Repeat:** None | **Horizontal Repeat:** None | **Backing:** None

Cleaning Code: S | **Warranty:** 5 years

Performance Standards



| | Americas Finish Code | Europe, Middle East and Africa Finish Code | Asia Pacific Finish Code | Gabriel Color |
|-----------------|-------------------------|--|-----------------------------|---------------|
| Black | 5W40 | 2011 | Pre-Approved Special | 60999 |
| Pepper | 5W41 | 2015 | Pre-Approved Special | 60003 |
| Pearl Grey | 5W42 | 2027 | Pre-Approved Special | 60001 |
| Crimson | 5W43 | 2001 | Pre-Approved Special | 64004 |
| Ink | 5W44 | 2021 | Pre-Approved Special | 66006 |
| Night Blue | 5W45 | 2017 | Pre-Approved Special | 60005 |
| Sepia | 5W48 | – | Pre-Approved Special | 64441 |
| Camellia Red | 5W51 | 2044 | Pre-Approved Special | 63066 |
| Emerald | 5W52 | – | Pre-Approved Special | 67042 |
| Snow Pea | 5W53 | 2047 | Pre-Approved Special | 68094 |
| Olive | 5W54 | 2048 | Pre-Approved Special | 68093 |
| Maroon | 5W56 | 2050 | Pre-Approved Special | 64154 |
| Black Raspberry | 5W57 | 2051 | Pre-Approved Special | 65075 |
| Spruce | 5W58 | 2052 | Pre-Approved Special | 68092 |
| Deep Blue | 5W60 | 2010 | Pre-Approved Special | 66004 |
| Chili Pepper | 5W61 | 2053 | Pre-Approved Special | 64094 |

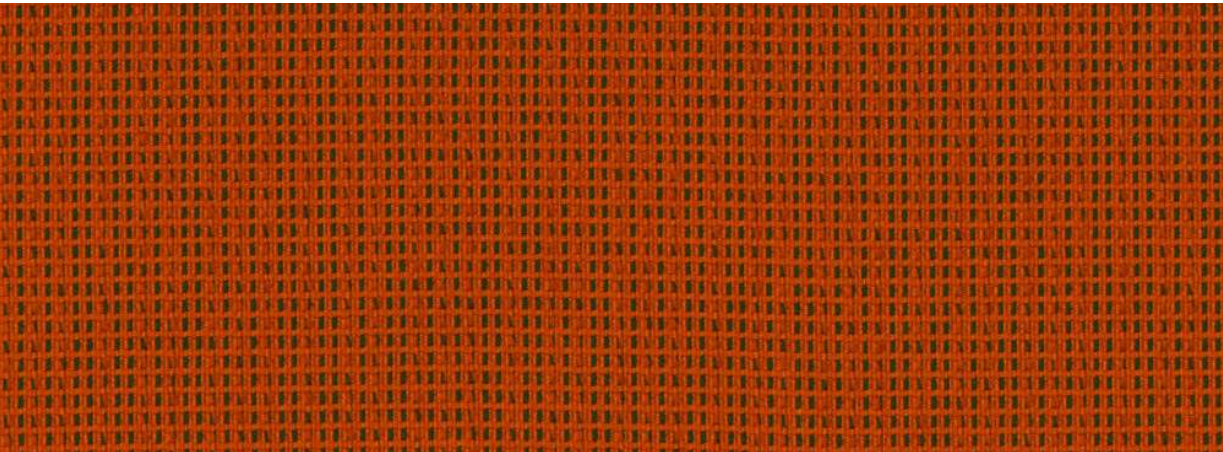
Redeem

Available across seating products, Redeem is a sustainable upholstery featuring an intricate textured weave. The versatile color palette ranges from playful brights to sophisticated neutrals.

Disclaimer

There may be variation in color, texture, and finish between this sample and the actual product.

Redeem



Cinnamon TM52



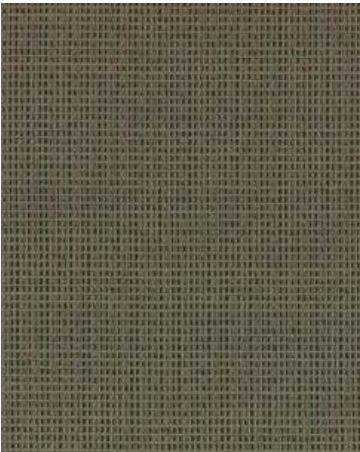
Brick TM50



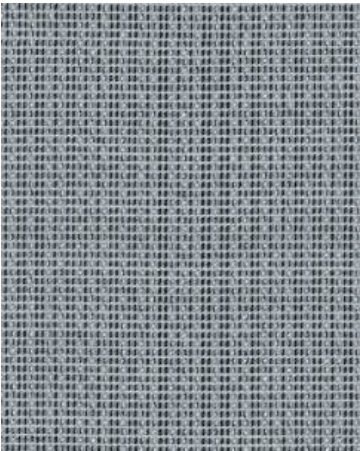
Water TM55



Mallard TM58



Chestnut TM63



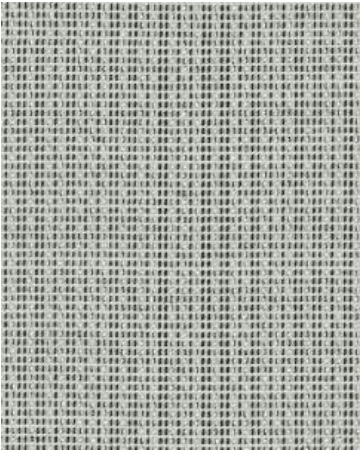
Greyhound TM60



Barnwood TM66



Granite TM64



Iceberg TM62

Redeem

Price Group 3, Coalesse 7

Technical Specifications

Contents: 0.4% Post Consumer Recycled Polyester, 12.1% Pre Consumer Recycled Polyester, 87.5% Polyester

Abrasion: 90,000 double rubs

Material Characteristics

Width: 56 in | **Vertical Repeat:** 0.06 in | **Horizontal Repeat:** 0.08 in | **Backing:** None

Cleaning Code: WS | **Warranty:** 5 years

Performance Standards



| | Americas Finish Code | Europe, Middle East and Africa Finish Code | Asia Pacific Finish Code |
|-----------|-------------------------|--|-----------------------------|
| Brick | TM50 | – | – |
| Cinnamon | TM52 | – | – |
| Water | TM55 | – | – |
| Mallard | TM58 | – | – |
| Greyhound | TM60 | – | – |
| Iceberg | TM62 | – | – |
| Chestnut | TM63 | – | – |
| Granite | TM64 | – | – |
| Barnwood | TM66 | – | – |

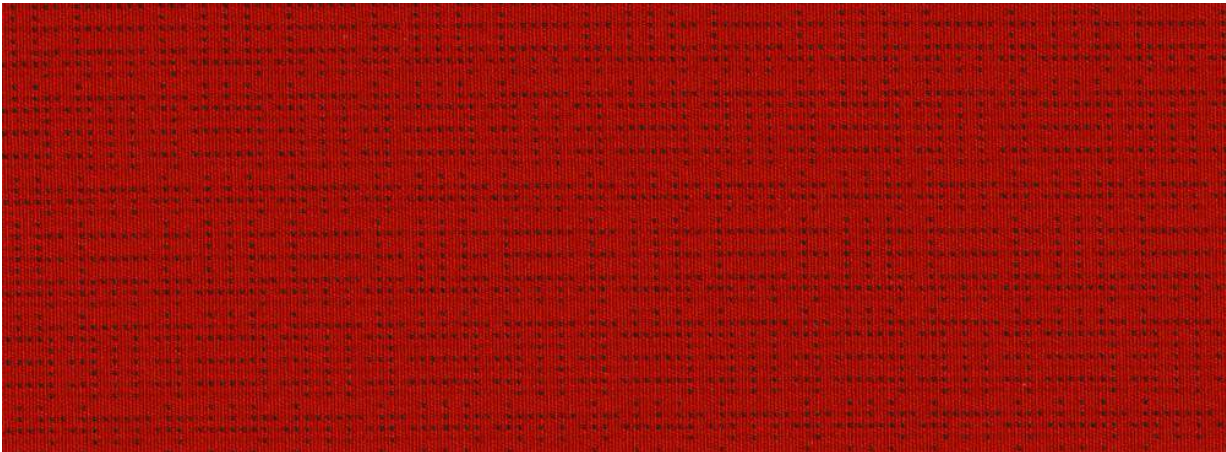
Retrieve

Available on seating products,
Retrieve is a sustainable upholstery
featuring an intricate patterned weave.
Made from a closed loop process,
Retrieve is designed with future
recycling in mind.

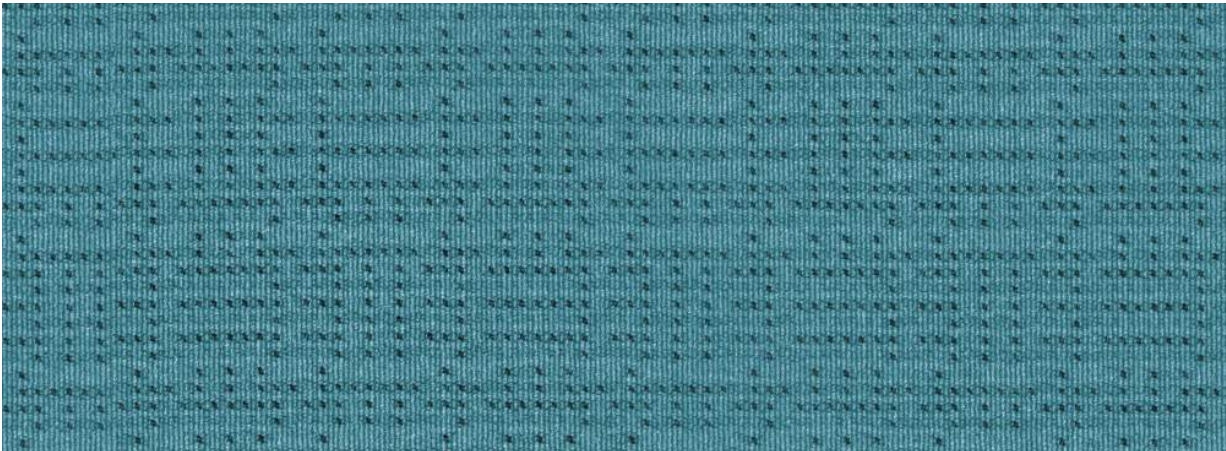
Disclaimer

There may be variation in color, texture, and finish between this sample and the actual product.

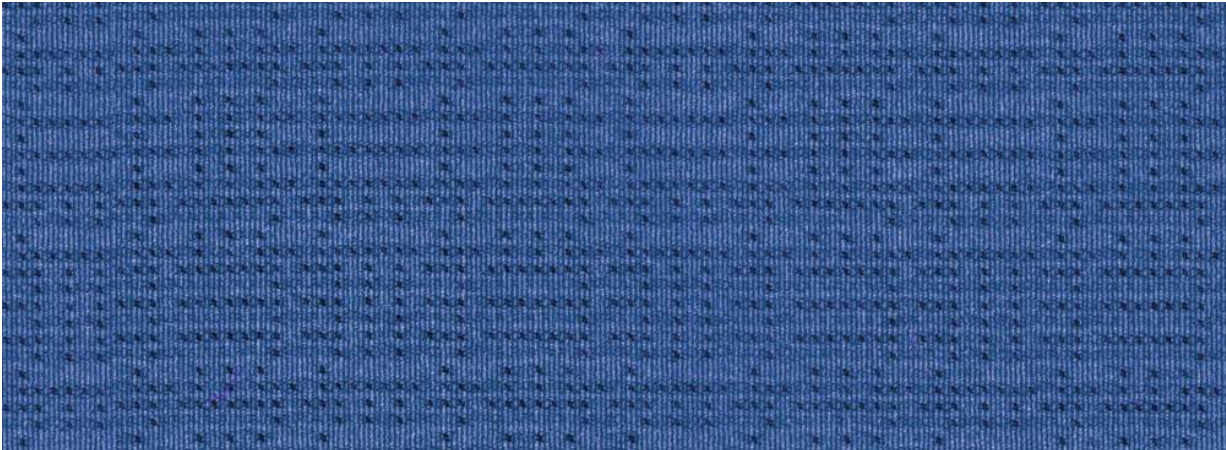
Retrieve



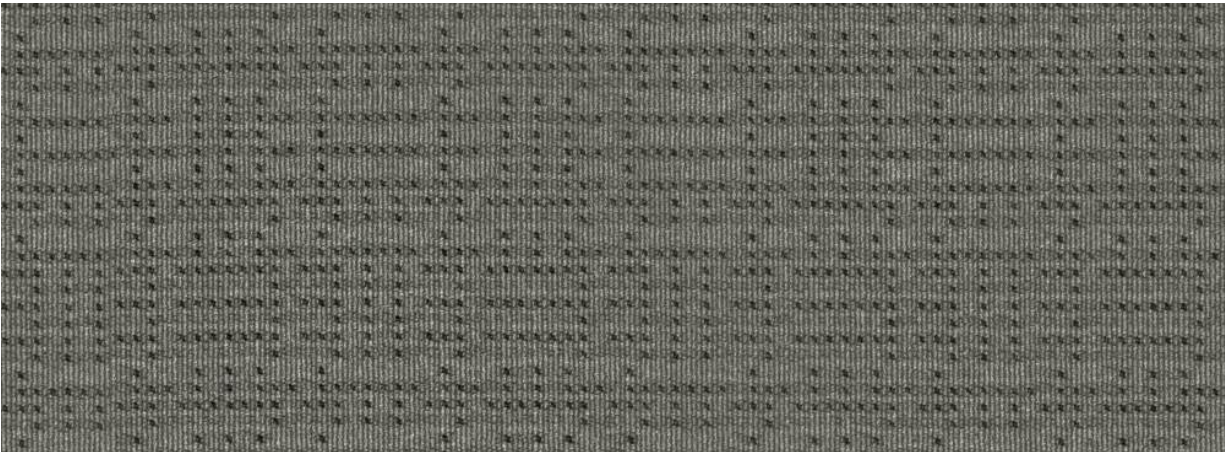
Gala TM32



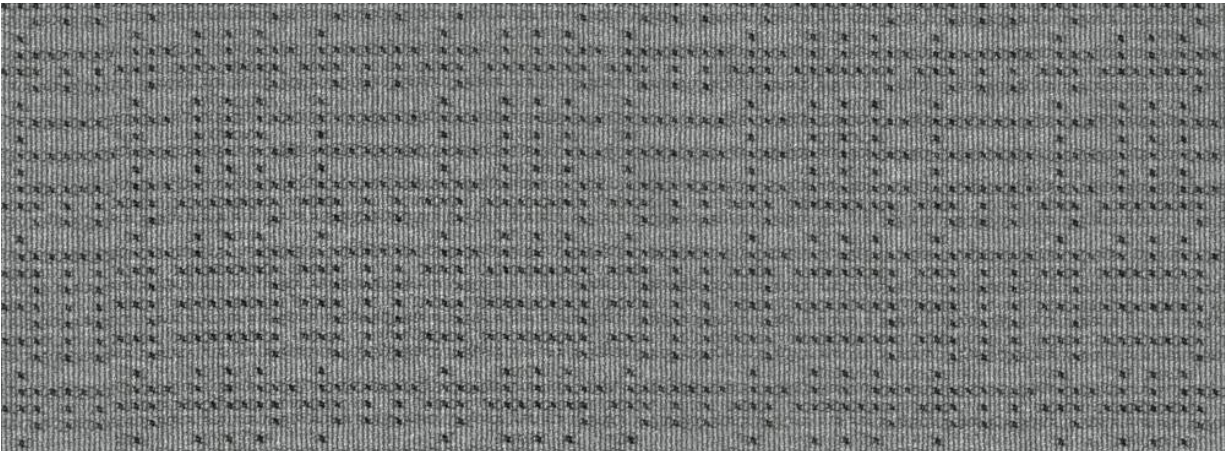
Lake TM31



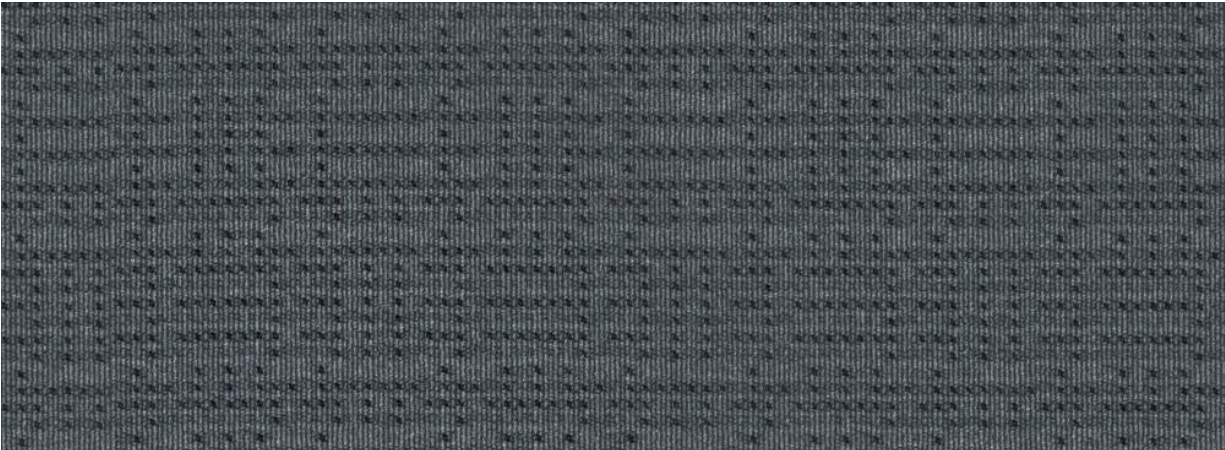
Submarine TM37



Seal TM43



Quarry TM40



Shadow TM42

Retrieve

Price Group 3, Coalesse 13

Technical Specifications

Contents: 0.6% Polyester, 26% Pre-Consumer Recycled Polyester, 73.4% Post Consumer Recycled Polyester

Abrasion: 90,000 double rubs

Material Characteristics

Width: 57 in | **Vertical Repeat:** 1 in | **Horizontal Repeat:** 1.44 in | **Backing:** None

Cleaning Code: WS | **Warranty:** 5 years

Performance Standards



| | Americas Finish Code | Europe, Middle East and Africa Finish Code | Asia Pacific Finish Code |
|-----------|-------------------------|--|-----------------------------|
| Lake | TM31 | – | – |
| Gala | TM32 | – | – |
| Submarine | TM37 | – | – |
| Quarry | TM40 | – | – |
| Shadow | TM42 | – | – |
| Seal | TM43 | – | – |

Bo Peep

Bo Peep is available across a range of seating products. It is a 100% wool textile that provides a timeless aesthetic in a variety of colors.

Disclaimer

There may be variation in color, texture, and finish between this sample and the actual product.

Bo Peep



Bone 5G67



Honey Mustard 5G72



Marmalade 5G73



Picnic 5G74



Bloom 5G76



Pinot 5G75



Grapevine 5G77



Carolina 5G81



Blue Bonnet 5G82



Nautical 5G83



Artichoke 5G79



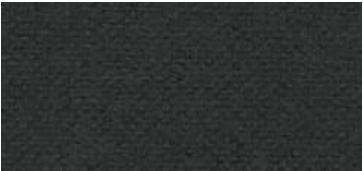
Serpent 5G80



Gravel 5G84



Sharkskin 5G85



Kohl 5G86

Bo Peep

Price Group 5, Coalesse 9

Technical Specifications

Contents: 100% Wool | **Abrasion:** 90,000 Martindale

Material Characteristics

Width: 54 in | **Vertical Repeat:** None | **Horizontal Repeat:** None | **Backing:** None

Cleaning Code: S | **Warranty:** 5 years

Performance Standards



| | Americas Finish Code | Europe, Middle East and Africa Finish Code | Asia Pacific Finish Code |
|---------------|-------------------------|--|-----------------------------|
| Bone | 5G67 | – | – |
| Honey Mustard | 5G72 | – | – |
| Marmalade | 5G73 | – | – |
| Picnic | 5G74 | – | – |
| Pinot | 5G75 | – | – |
| Bloom | 5G76 | – | – |
| Grapevine | 5G77 | – | – |
| Artichoke | 5G79 | – | – |
| Serpent | 5G80 | – | – |
| Carolina | 5G81 | – | – |
| Blue Bonnet | 5G82 | – | – |
| Nautical | 5G83 | – | – |
| Gravel | 5G84 | – | – |
| Sharkskin | 5G85 | – | – |
| Kohl | 5G86 | – | – |

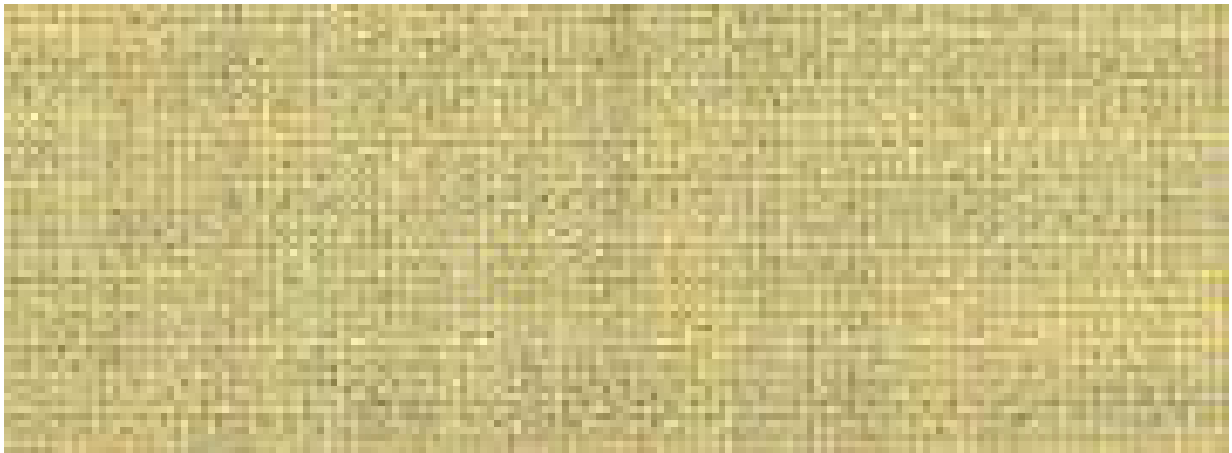
Remix

Available for lounge and task seating, Remix features a sophisticated design. It is constructed from melange yarns, with each thread consisting of three colors.

Disclaimer

There may be variation in color, texture, and finish between this sample and the actual product.

Remix



Primevera Yellow

RE12



Pumpkin

RE02



Rust

RE01



Sky Blue

RE09



Blue Jean

RE10



Night Blue

RE13



Ivy Green

RE11



Linen Beige

RE06



Beige

RE05



Dark Chocolate

RE04



Concrete Grey

RE08



Pebble

RE03

Remix

Price Group 5, Coalesse 9

Technical Specifications
Contents: 10% Nylon, 90% Wool | Abrasion: 100,000 cycles Martindale

Material Characteristics
Width: 54 in | Vertical Repeat: None | Horizontal Repeat: None | Backing: None
Cleaning Code: S | Warranty: 5 years

Performance Standards



| | Americas Finish Code | Europe, Middle East and Africa Finish Code | Asia Pacific Finish Code | Kvadrat Color |
|------------------|-------------------------|--|-----------------------------|---------------|
| Rust | RE01 | RE01 | – | 653 |
| Pumpkin | RE02 | RE02 | – | 443 |
| Pebble | RE03 | RE03 | – | 163 |
| Dark Chocolate | RE04 | RE04 | – | 383 |
| Beige | RE05 | RE05 | – | 233 |
| Linen Beige | RE06 | RE06 | – | 223 |
| Concrete Grey | RE08 | RE08 | – | 123 |
| Sky Blue | RE09 | RE09 | – | 823 |
| Blue Jean | RE10 | RE10 | – | 743 |
| Ivy Green | RE11 | RE11 | – | 933 |
| Primevera Yellow | RE12 | RE12 | – | 923 |
| Night Blue | RE13 | RE13 | – | 873 |

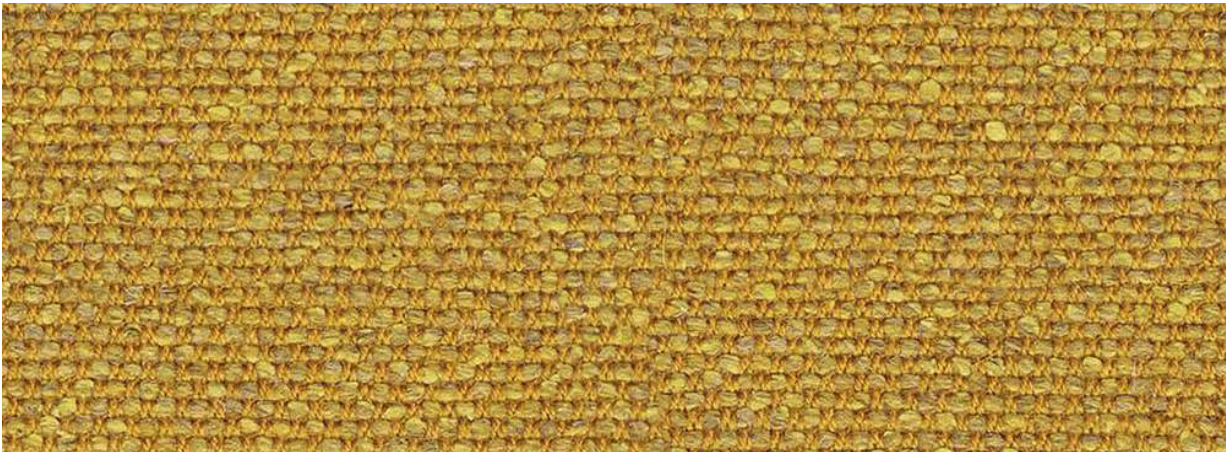
Silk

Silk features a blend of three natural-material fibers: silk, flax and wool. It looks beautiful on lounge products and enhances task chairs.

Disclaimer

There may be variation in color, texture, and finish between this sample and the actual product.

Silk



Dijon 5L31



Flaxen 5L39



Boysenberry 5L33



Marina 5L35



Blue Raspberry 5L37



Seaweed 5L32



Heather Blue 5L36



Cauldron 5L38

Silk

Price Group 5, Coalesse 9

Technical Specifications

Contents: 11% Silk, 22% Flax, 67% Wool | **Abrasion:** 100,000 double rubs

Material Characteristics

Width: 54 in | **Vertical Repeat:** None | **Horizontal Repeat:** None | **Backing:** None

Cleaning Code: WS | **Warranty:** 5 years

Performance Standards



| | Americas Finish Code | Europe, Middle East and Africa Finish Code | Asia Pacific Finish Code | Camira Color |
|----------------|-------------------------|--|-----------------------------|--------------|
| Dijon | 5L31 | 5L31 | – | SLK02 |
| Seaweed | 5L32 | 5L32 | – | SLK06 |
| Boysenberry | 5L33 | 5L33 | – | SLK07 |
| Marina | 5L35 | 5L35 | – | SLK15 |
| Heather Blue | 5L36 | 5L36 | – | SLK16 |
| Blue Raspberry | 5L37 | 5L37 | – | SLK19 |
| Cauldron | 5L38 | 5L38 | – | SLK20 |
| Flaxen | 5L39 | 5L39 | – | SLK21 |

Brisa

Brisa distinguishes itself from other coated materials because of its breathable design. Brisa has a leather-like grain and a soft hand which provides a high level of comfort. With Brisa's rich aesthetic, it's suited for conference rooms, task and lounge seating and offered in a range of color options.

Disclaimer

There may be variation in color, texture, and finish between this sample and the actual product.

Brisa



Cinnabar BR16



Pompeian Red BR14



Sterling Blue BR09



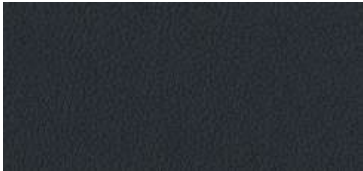
Mineral BR24



Cambridge Blue BR11



Skyway BR25



Night Navy BR10



Celery BR08



Sage BR07



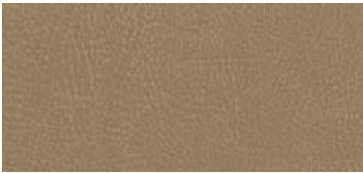
Esmeralda BR28



Seaweed BR29



New Sand BR18



Buckskin BR22



Moccasin BR21



Carmel BR31



Bridle BR32



Truffle BR04



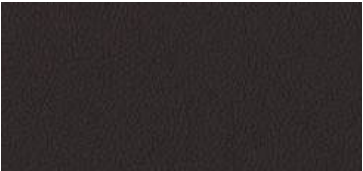
Ash BR06



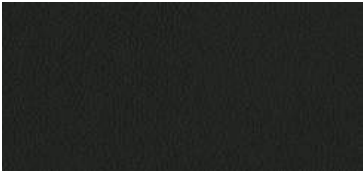
Iron BR26



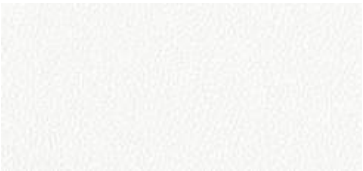
Stormy BR27



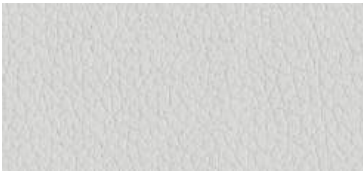
Abyss BR12



Black Onyx BR01



White BR20



Moon BR33



Bone BR30

Brisa

Price Group 6, Coalesse 10

Technical Specifications

Contents: 100% Polyurethane Surface | **Abrasion:** 200,000 double rubs

Material Characteristics

Width: 54 in | **Vertical Repeat:** None | **Horizontal Repeat:** None | **Backing:** None

Cleaning Code: WS | **Warranty:** 5 years

Bleach Cleanable

Performance Standards



| | Americas Finish Code | Europe, Middle East and Africa Finish Code | Asia Pacific Finish Code | UltraFabrics Color |
|----------------|-------------------------|--|-----------------------------|-----------------------|
| Black Onyx | BR01 | – | – | 533-5749 |
| Truffle | BR04 | – | – | 533-3913 |
| Ash | BR06 | – | – | 533-5802 |
| Sage | BR07 | – | – | 533-4487 |
| Celery | BR08 | – | – | 533-4510 |
| Sterling Blue | BR09 | – | – | 533-2698 |
| Night Navy | BR10 | – | – | 533-2694 |
| Cambridge Blue | BR11 | – | – | 533-2645 |
| Abyss | BR12 | – | – | 533-9378 |
| Pompeian Red | BR14 | – | – | 533-1383 |
| Cinnabar | BR16 | – | – | 533-8245 |
| New Sand | BR18 | – | – | 533-3946 |
| White | BR20 | – | – | 533-5747 |
| Moccasin | BR21 | – | – | 535-3871 |
| Buckskin | BR22 | – | – | 535-3134 |
| Mineral | BR24 | – | – | 533-2697 |
| Skyway | BR25 | – | – | 533-2696 |
| Iron | BR26 | – | – | 535-5679 |
| Stormy | BR27 | – | – | 535-5773 |
| Esmeralda | BR28 | – | – | 533-4302 |
| Seaweed | BR29 | – | – | 533-4303 |
| Bone | BR30 | – | – | 533-3822 |
| Carmel | BR31 | – | – | 533-3591 |
| Bridle | BR32 | – | – | 535-3976 |
| Moon | BR33 | – | – | 533-3277 |

Please reference the surface materials spec guide for additional cleaning instructions and recommended applications for this material.

Steelcut Trio

Steelcut Trio is available across a range of seating products and was designed with a special weave to create a three-dimensional surface.

Steelcase

Disclaimer

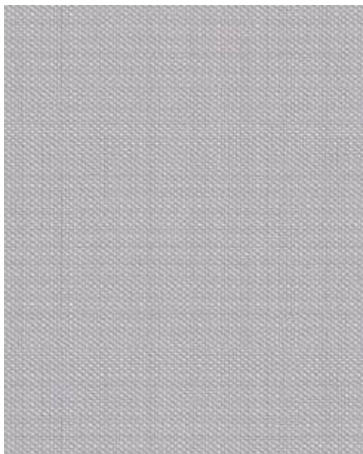
There may be variation in color, texture, and finish between this sample and the actual product.

Item #23-0000029 02/24 ©2022 Steelcase Inc. All rights reserved. All specifications subject to change without notice. Trademarks used herein are the property of Steelcase Inc. or of their respective owners. Printed in U.S.A.

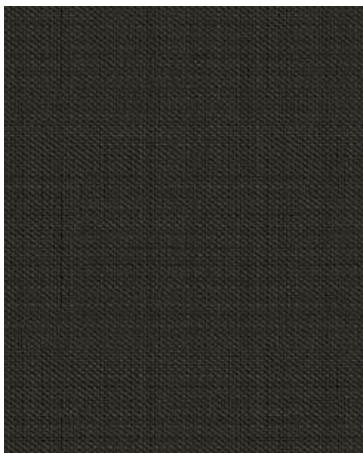
Steelcut Trio



Cassonade Beige TR03



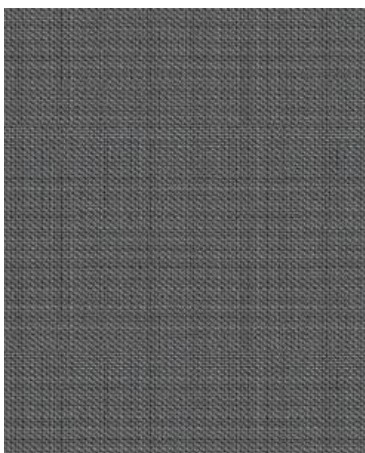
Mist Grey TR01



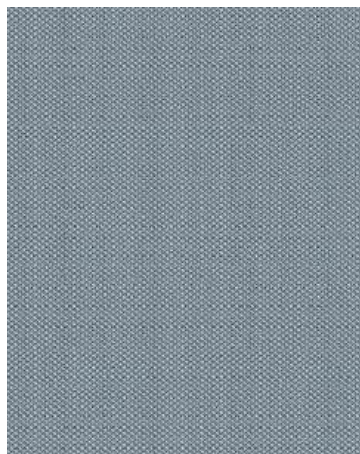
Licorice Black TR06



Nutmeg Beige TR04



Stone Grey TR02



Ice Blue

TR11



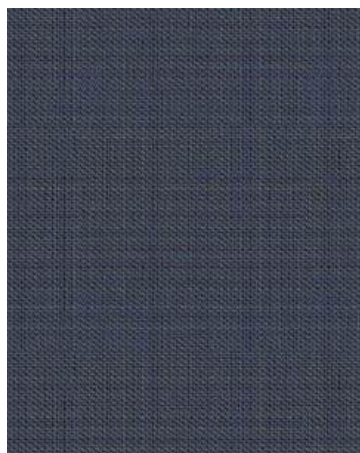
Coastal Oasis

TR18



Deep Sea

TR19



Brown Frost

TR15

Steelcut Trio

Price Group 7

Technical Specifications
Contents: 10% Nylon, 90% Wool | Abrasion: 75,000 Martindale

Material Characteristics
Width: 55 in | Vertical Repeat: None | Horizontal Repeat: None | Backing: None
Cleaning Code: S | Warranty: 5 years

Performance Standards
   

| | Americas Finish Code | Europe, Middle East and Africa Finish Code | Asia Pacific Finish Code | Kvadrat Color |
|-----------------|-------------------------|--|-----------------------------|---------------|
| Mist Grey | TR01 | TR01 | Pre-approved Special | 105 |
| Stone Grey | TR02 | TR02 | Pre-approved Special | 153 |
| Cassonade Beige | TR03 | TR03 | Pre-approved Special | 213 |
| Nutmeg Beige | TR04 | TR04 | Pre-approved Special | 253 |
| Licorice Black | TR06 | TR06 | Pre-approved Special | 383 |
| Ice Blue | TR11 | TR11 | Pre-approved Special | 713 |
| Brown Frost | TR15 | TR15 | Pre-approved Special | 883 |
| Coastal Oasis | TR18 | TR983 | Pre-approved Special | 983 |
| Deep Sea | TR19 | TR746 | Pre-approved Special | 746 |

Café Leather

This new standard leather features a two-tone color design and offers a rich color palette. Its warmth, softness, and gently aged visual lends itself to residential settings but performs at the contract level. Café is available across seating applications.

Disclaimer

There may be variation in color, texture, and finish between this sample and the actual product.

Café Leather



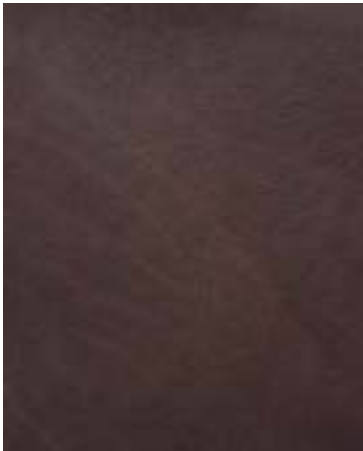
Chai L213



Blueberry Tart L214



Candied Pecan L212



Chocolate Mousse L211



Early Grey L209



Espresso Bean L210



Black Tea L208

Café Leather

Leather 1

Technical Specifications
Contents: 100% Leather | Abrasion: None

Material Characteristics
Width: Varies | Vertical Repeat: None | Horizontal Repeat: None | Backing: None
Cleaning Code: 5 | Warranty: 12 years

Performance Standards



| | Americas Finish Code | Europe, Middle East and Africa Finish Code | Asia Pacific Finish Code |
|------------------|-------------------------|--|-----------------------------|
| Black Tea | L208 | – | – |
| Earl Grey | L209 | – | – |
| Espresso Bean | L210 | – | – |
| Chocolate Mousse | L211 | – | – |
| Candied Pecan | L212 | – | – |
| Chai | L213 | – | – |
| Blueberry Tart | L214 | – | – |

Elmosoft

Elmosoft is a soft, pliable Semi-Aniline leather that provides an extensive color selection, from soft neutrals to muted tones. This material combines outstanding comfort with excellent durability across our seating products.

Disclaimer

There may be variation in color, texture, and finish between this sample and the actual product.

Elmosoft



Macadamia L763



Canvas L762



Mustard L758



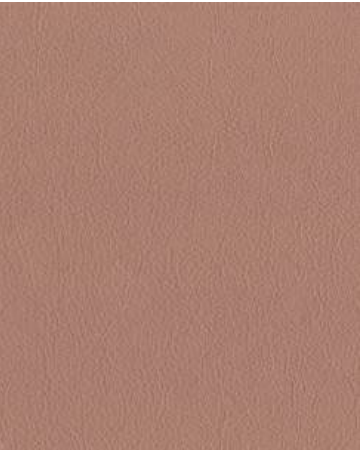
Peanut Butter L755



Chamois L144



Mica L114



Mauve L769



Garnet L140



Scarlet L135



Ruby L134



Red Birch L128



Oxblood L752

Elmosoft



Storm L723



Plum Pleasure L116



Maritime Blue L110



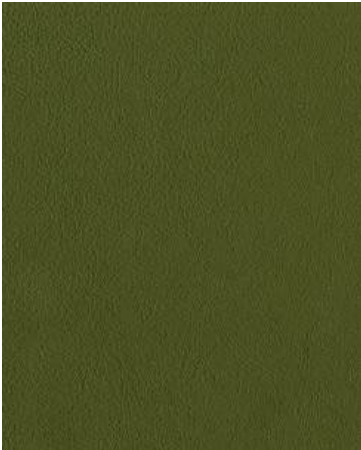
Midnight Blue L111



Tropical L768



Coyote L775



Forest Green L743



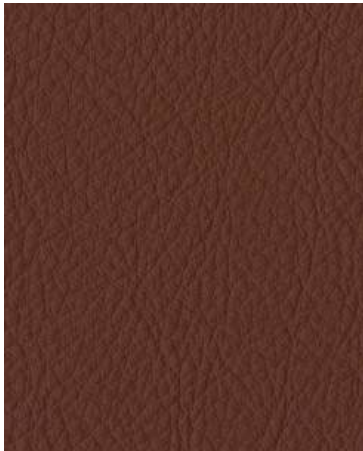
Hunter L730



Cigar L747



Bluffstone L750



Russet L146



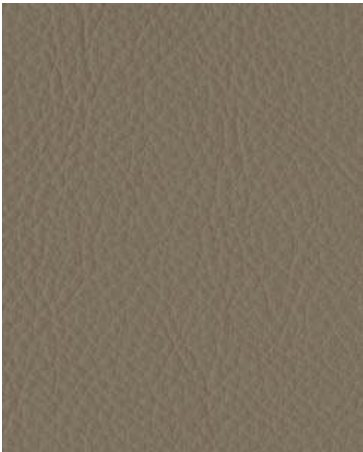
Pecan L143



Saddle L147



Bourbon L138



Cameo L717



Beaver L749



Espresso L133



Chalice L773



Timberwolf L772



Truffle L122



Parchment L711



Cadet L770



Dove Grey L115



Gunmetal L113



Cinder L139



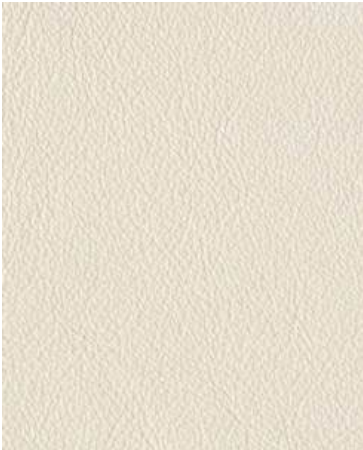
Oil L774



Ebony L112



Sugar L709



White L151

Elmosoft

Price Group Elmosoft, Coalesse E

Technical Specifications

Contents: 100% Leather | **Abrasion:** None

Material Characteristics

Width: Varies | **Vertical Repeat:** None | **Horizontal Repeat:** None | **Backing:** None

Cleaning Code: WS | **Warranty:** 12 years

Performance Standards



| | Americas Finish Code | Europe, Middle East and Africa Finish Code | Asia Pacific Finish Code | Elmosoft Color |
|---------------|-------------------------|--|-----------------------------|----------------|
| Maritime Blue | L110 | – | – | 77127 |
| Midnight Blue | L111 | – | – | 97038 |
| Ebony | L112 | – | – | 99999 |
| Gunmetal | L113 | – | – | 71017 |
| Mica | L114 | – | – | 1061 |
| Dove Grey | L115 | – | – | 11049 |
| Plum Pleasure | L116 | – | – | 77158 |
| Truffle | L122 | – | – | 1003 |
| Red Birch | L128 | – | – | 35126 |
| Espresso | L133 | – | – | 93129 |
| Ruby | L134 | – | – | 55002 |
| Scarlet | L135 | – | – | 5011 |
| Bourbon | L138 | – | – | 95006 |
| Cinder | L139 | – | – | 93068 |
| Garnet | L140 | – | – | 45065 |
| Pecan | L143 | – | – | 54035 |
| Chamois | L144 | – | – | 22030 |
| Russet | L146 | – | – | 33001 |
| Saddle | L147 | – | – | 33004 |
| White | L151 | – | – | 100 |
| Sugar | L709 | – | – | 109 |
| Parchment | L711 | – | – | 1037 |
| Cameo | L717 | – | – | 13072 |
| Storm | L723 | – | – | 17027 |
| Hunter | L730 | – | – | 98015 |
| Forest Green | L743 | – | – | 98047 |
| Cigar | L747 | – | – | 43054 |
| Beaver | L749 | – | – | 93099 |
| Bluffstone | L750 | – | – | 13087 |
| Oxblood | L752 | – | – | 75010 |
| Peanut Butter | L755 | – | – | 22024 |
| Mustard | L758 | – | – | 44012 |
| Canvas | L762 | – | – | 1021 |
| Macadamia | L763 | – | – | 118 |
| Tropical | L768 | – | – | 78023 |
| Mauve | L769 | – | – | 16003 |
| Cadet | L770 | – | – | 1085 |
| Timberwolf | L772 | – | – | 11033 |
| Chalice | L773 | – | – | 11073 |
| Oil | L774 | – | – | 91102 |
| Coyote | L775 | – | – | 13048 |

Due to the constantly evolving dynamics of information pertaining to disinfecting and protecting against bacteria and viruses, please refer to <https://www.steelcase.com/cleaning-steelcase-products/> for the most up-to-date resources.

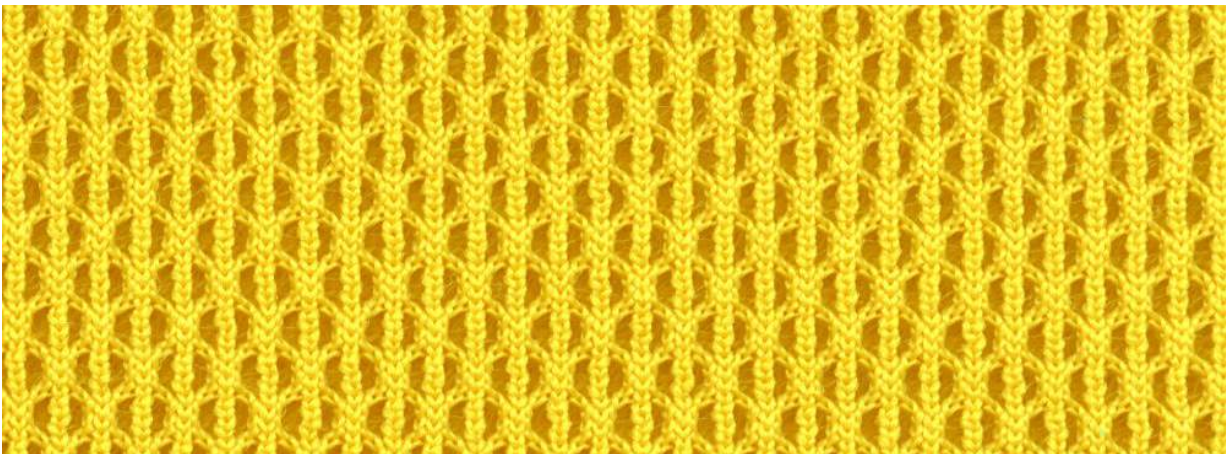
Connect 3D

Connect 3D is a refined spacer knit that facilitates comfort for our seating products and comes in a range of inspiring colors.

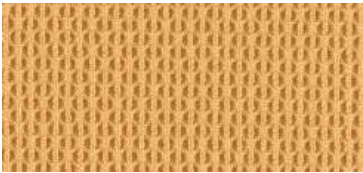
Disclaimer

There may be variation in color, texture, and finish between this sample and the actual product.

Connect 3D



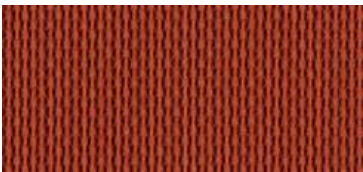
Canary 5036



Turmeric/Honey 5016



Tangerine 5017



Saffron 5537



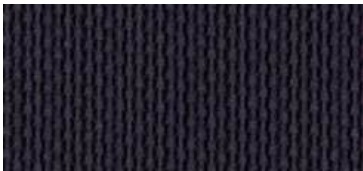
Scarlet 5018



Merlot 5535



Concord 5019



Aubergine 5532



Lagoon 5536



Blue Jay 5021



Royal Blue 5014



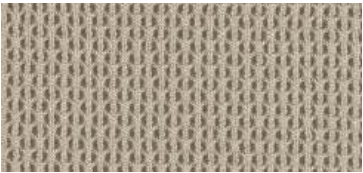
Wasabi 5023



Peacock 5533



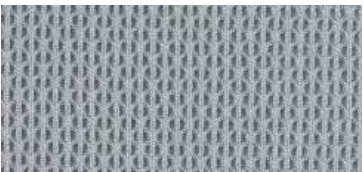
Jungle 5534



Malt 5027



Root Beer 5028



Nickel 5024



Graphite 5025



Sailor 5030



Licorice 5026



Coconut 5015

Connect 3D

Technical Specifications

Contents: 100% Polyester (Antimony Free Yarn) | **Abrasion:** 100,000 double rubs

Material Characteristics

Width: 59 in | **Vertical Repeat:** 0.13 in | **Horizontal Repeat:** 0.17 in | **Backing:** None

Cleaning Code: WS | **Warranty:** 12 years

Performance Standards



| | Americas Finish Code | Europe, Middle East and Africa Finish Code | Asia Pacific Finish Code |
|----------------|-------------------------|--|-----------------------------|
| Royal Blue | 5014 | – | – |
| Coconut | 5015 | 14 | 5015 |
| Turmeric/Honey | 5016 | 38 | 5016 |
| Tangerine | 5017 | 05 | – |
| Scarlet | 5018 | 15 | – |
| Concord | 5019 | – | – |
| Blue Jay | 5021 | 16 | – |
| Wasabi | 5023 | 03 | – |
| Nickel | 5024 | – | – |
| Graphite | 5025 | 10 | 5025 |
| Licorice | 5026 | 04 | – |
| Malt | 5027 | 12 | – |
| Root Beer | 5028 | – | – |
| Sailor | 5030 | – | – |
| Canary | 5036 | – | – |
| Aubergine | 5532 | 32 | 5532 |
| Peacock | 5533 | 33 | 5533 |
| Jungle | 5534 | 34 | 5534 |
| Merlot | 5535 | 35 | 5535 |
| Lagoon | 5536 | 36 | 5536 |
| Saffron | 5537 | 37 | 5537 |

Qivi Net

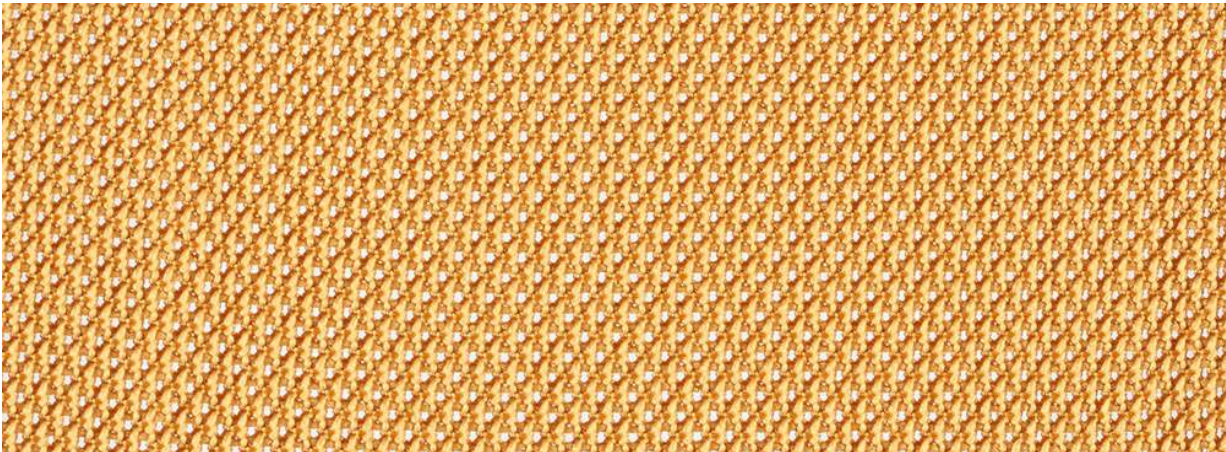
Qivi Net was designed specifically for the Qivi chair. This collection provides range with vibrant colors and complementary neutrals.

Disclaimer

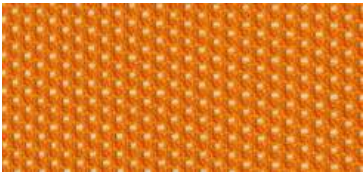
There may be variation in color, texture, and finish between this sample and the actual product.

Item #21-0000451 01/22 ©2022 Steelcase Inc. All rights reserved. All specifications subject to change without notice. Trademarks used herein are the property of Steelcase Inc. or of their respective owners. Printed in U.S.A.

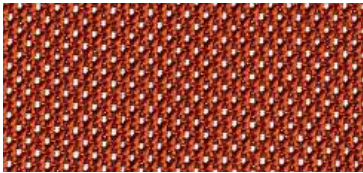
Qivi Net



Honey QN14



Tangerine QN03



Saffron QN16



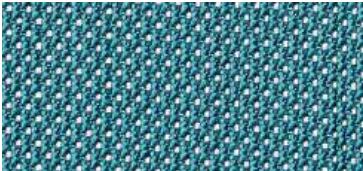
Scarlet QN07



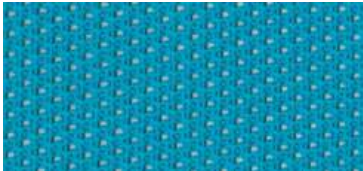
Merlot QN13



Aubergine QN10



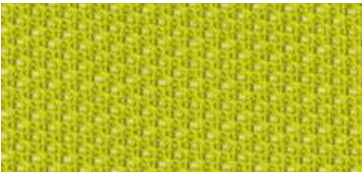
Lagoon QN15



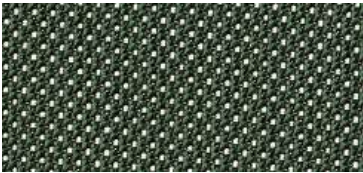
Blue Jay QN08



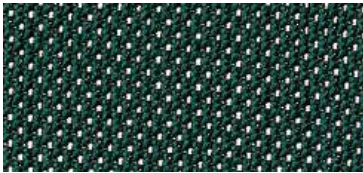
Royal Blue QN09



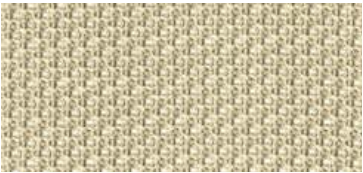
Wasabi QN01



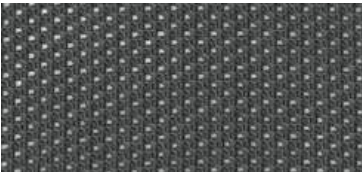
Jungle QN12



Peacock QN11



Malt QN05



Graphite QN04



Licorice QN02



Coconut QN06

Qivi Net

Technical Specifications

Contents: 100% Nylon 6.6 | **Abrasion:** 100,000 double rubs

Material Characteristics

Width: Knit to size | **Vertical Repeat:** None | **Horizontal Repeat:** None | **Backing:** None

Cleaning Code: WS | **Warranty:** 12 years

Performance Standards



| | Americas Finish Code | Europe, Middle East and Africa Finish Code | Asia Pacific Finish Code |
|------------|-------------------------|--|-----------------------------|
| Wasabi | QN01 | 01-Net | QN01 |
| Licorice | QN02 | 02-Net | QN02 |
| Tangerine | QN03 | 03-Net | QN03 |
| Graphite | QN04 | 04-Net | QN04 |
| Malt | QN05 | 05-Net | QN05 |
| Coconut | QN06 | 06-Net | QN06 |
| Scarlet | QN07 | 07-Net | QN07 |
| Blue Jay | QN08 | 08-Net | QN08 |
| Royal Blue | QN09 | 09-Net | QN09 |
| Aubergine | QN10 | 10-Net | QN10 |
| Peacock | QN11 | 11-Net | QN11 |
| Jungle | QN12 | 12-Net | QN12 |
| Merlot | QN13 | 13-Net | QN13 |
| Honey | QN14 | 14-Net | QN14 |
| Lagoon | QN15 | 15-Net | QN15 |
| Saffron | QN16 | 16-Net | QN16 |

Reply Air Mesh

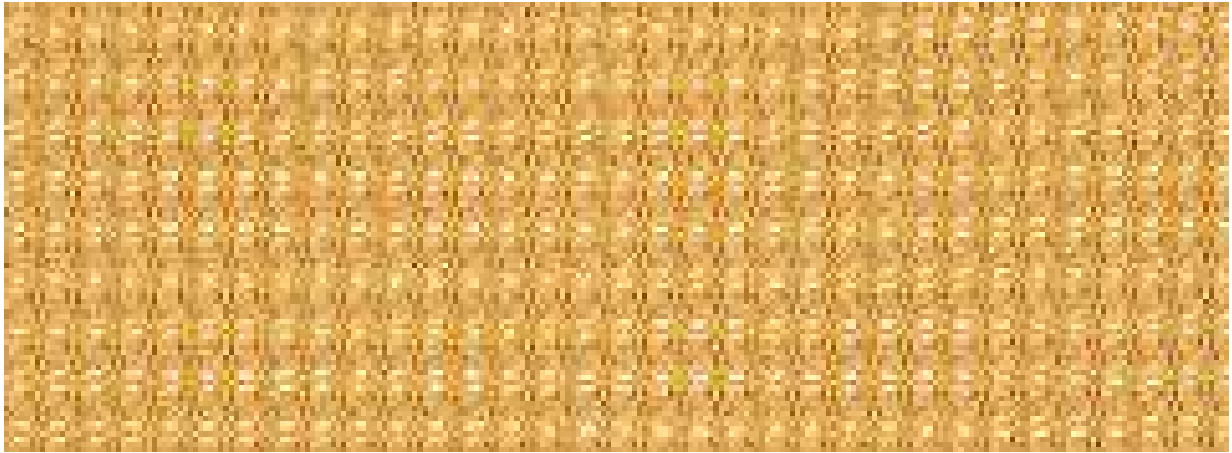
Reply Air Mesh provides a sophisticated aesthetic without jeopardizing performance. This material was designed to create a cohesive system with the frame of a chair.

Disclaimer

There may be variation in color, texture, and finish between this sample and the actual product.

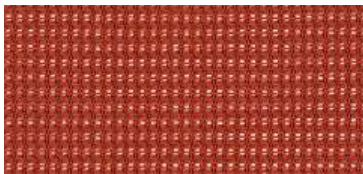
Item #21-0000454 04/23 ©2021 Steelcase Inc. All rights reserved. All specifications subject to change without notice. Trademarks used herein are the property of Steelcase Inc. or of their respective owners. Printed in U.S.A.

Reply Air Mesh



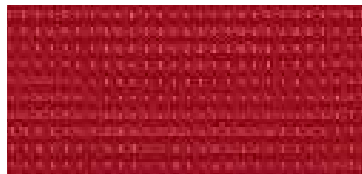
Honey

AR17



Saffron

AR19



Red

AR04



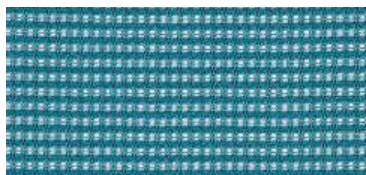
Merlot

AR16



Aubergine

AR13



Lagoon

AR18



Royal Blue

AR05



Apple Green

AR06



Jungle

AR15



Peacock

AR14



Sable

AR09



Grey

AR01




Black

AR02

Reply Air Mesh

Technical Specifications
Contents: 34% Polyamide, 66% Polyester | Abrasion: 100,000 double rubs

Material Characteristics
Width: 58 in | Vertical Repeat: None | Horizontal Repeat: None | Backing: None
Cleaning Code: WS | Warranty: 12 years

Performance Standards
   

| | Americas Finish Code | Europe, Middle East and Africa Finish Code | Asia Pacific Finish Code |
|-------------|-------------------------|--|-----------------------------|
| Grey | AR01 | AR01 | AR01 |
| Black | AR02 | AR02 | AR02 |
| Red | AR04 | AR04 | AR04 |
| Royal Blue | AR05 | AR05 | AR05 |
| Apple Green | AR06 | AR06 | AR06 |
| Sable | AR09 | – | AR09 |
| Aubergine | AR13 | AR13 | AR13 |
| Peacock | AR14 | AR14 | AR14 |
| Jungle | AR15 | AR15 | AR15 |
| Merlot | AR16 | AR16 | AR16 |
| Honey | AR17 | AR17 | AR17 |
| Lagoon | AR18 | AR18 | AR18 |
| Saffron | AR19 | AR19 | AR19 |

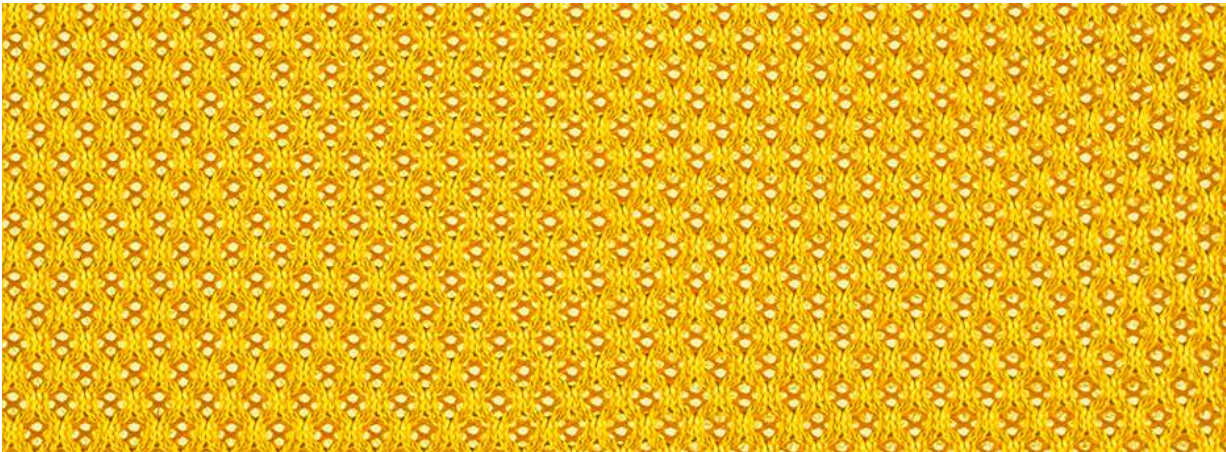
3D Microknit

3D Microknit has a small-scale design that provides added comfort and support to our seating products. 3D Microknit comes in a range of accent colors and neutrals.

Disclaimer

There may be variation in color, texture, and finish between this sample and the actual product.

3D Microknit



Canary 5T30



Honey 5T36



Malt 5T25



Tangerine 5T27



Saffron 5T38



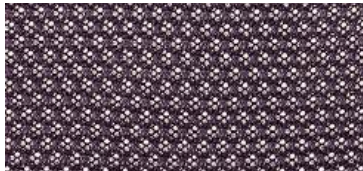
Scarlet 5T24



Merlot 5T35



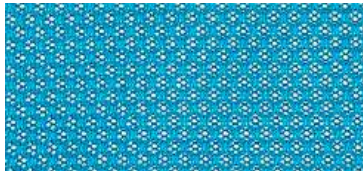
Concord 5T28



Aubergine 5T32



Lagoon 5T37



Blue Jay 5T23



Royal Blue 5T22



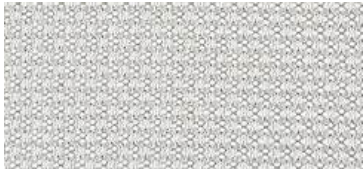
Wasabi 5T26



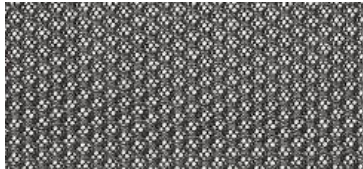
Jungle 5T34



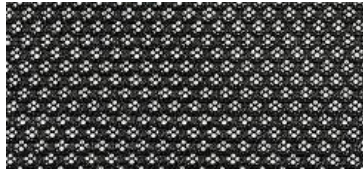
Peacock 5T33



Nickel 5T20



Graphite 5T29



Licorice 5T21



Seagull 5T31

3D Microknit

Technical Specifications

Contents: 100% Polyester | **Abrasion:** 100,000 double rubs

Material Characteristics

Width: 54 in | **Vertical Repeat:** None | **Horizontal Repeat:** None | **Backing:** None

Cleaning Code: WS | **Warranty:** 12 years

Performance Standards



| | Americas Finish Code | Europe, Middle East and Africa Finish Code | Asia Pacific Finish Code |
|------------|-------------------------|--|-----------------------------|
| Nickel | 5T20 | 5T20 | 5T20 |
| Licorice | 5T21 | 5T21 | 5T21 |
| Royal Blue | 5T22 | 5T22 | 5T22 |
| Blue Jay | 5T23 | 5T23 | 5T23 |
| Scarlet | 5T24 | 5T24 | 5T24 |
| Malt | 5T25 | 5T25 | 5T25 |
| Wasabi | 5T26 | 5T26 | 5T26 |
| Tangerine | 5T27 | 5T27 | 5T27 |
| Concord | 5T28 | 5T28 | 5T28 |
| Graphite | 5T29 | 5T29 | 5T29 |
| Canary | 5T30 | 5T30 | 5T30 |
| Seagull | 5T31 | 5T31 | 5T31 |
| Aubergine | 5T32 | 5T32 | 5T32 |
| Peacock | 5T33 | 5T33 | 5T33 |
| Jungle | 5T34 | 5T34 | 5T34 |
| Merlot | 5T35 | 5T35 | 5T35 |
| Honey | 5T36 | 5T36 | 5T36 |
| Lagoon | 5T37 | 5T37 | 5T37 |
| Saffron | 5T38 | 5T38 | 5T38 |

Intermix

Intermix is a proprietary performance textile that is central to Steelcase Karman's performance, comfort and aesthetic. Using patented Shrinx technology it creates ideal ergonomic support – it never sags or feels stiff. Unlike traditional mesh, the versatility in Intermix' proprietary weaving process results in a diverse range of 14 colorwaves that allow Steelcase Karman to fit a wide range of spaces.

| | |
|-----------------|------------------------------|
| Intermix | Classic + translucent |
| Intermix Opaque | Luxurious + Residential |
| Intermix Shift | Color-shifting + provocative |

Disclaimer

There may be variation in color, texture, and finish between this sample and the actual product.

Intermix



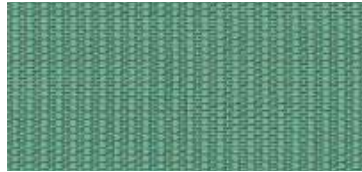
Merlot

KR11



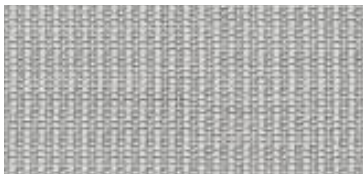
Baltic

KR09



Bright Peacock

KR10



Platinum

KR07



Black

KR08

Intermix Shift



Red-Blue

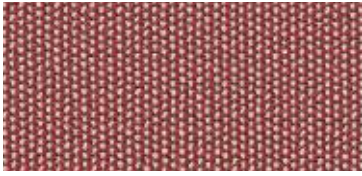
KR12



Blue-Gold

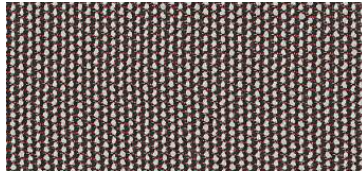
KR13

Intermix Opaque



Merlot

KR20



Bronze

KR16



Baltic

KR18



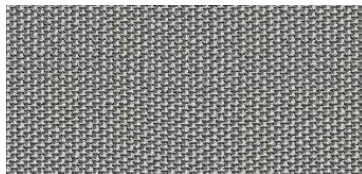
Peacock

KR19



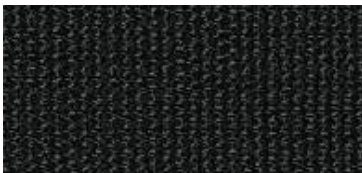
Seagull

KR14



Platinum

KR15



Black

KR17

Intermix Collection

Technical Specifications

Contents: 70% Polyester | **Abrasion:** 60,000 double rubs

Material Characteristics

Width: 62 in | **Vertical Repeat:** None | **Horizontal Repeat:** None | **Backing:** None

Cleaning Code: WS | **Warranty:** 12 years

| Intermix | Americas Finish Code | Europe, Middle East and Africa Finish Code | Asia Pacific Finish Code |
|----------------|-------------------------|--|-----------------------------|
| Platinum | KR07 | KR07 | KR07 |
| Black | KR08 | KR08 | KR08 |
| Baltic | KR09 | KR09 | KR09 |
| Bright Peacock | KR10 | KR10 | KR10 |
| Merlot | KR11 | KR11 | KR11 |

Intermix Shift

| | | | |
|-----------|------|------|------|
| Red-Blue | KR12 | KR12 | KR12 |
| Blue-Gold | KR13 | KR13 | KR13 |

Intermix Opaque

| | | | |
|----------|------|------|------|
| Seagull | KR14 | KR14 | KR14 |
| Platinum | KR15 | KR15 | KR15 |
| Bronze | KR16 | KR16 | KR16 |
| Black | KR17 | KR17 | KR17 |
| Baltic | KR18 | KR18 | KR18 |
| Peacock | KR19 | KR19 | KR19 |
| Merlot | KR20 | KR20 | KR20 |

Plastic








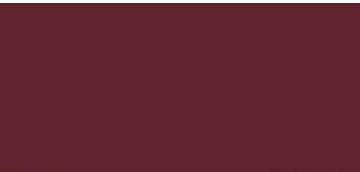

From classic neutrals to fundamental color selections, the plastic choices coordinate with paint, laminate, and other finish options in our offering.

Disclaimer

Materials are digitally printed for reference and may vary from final product. Please refer to a physical sample for actual color and detail.

Item #23-0000026 04/23 ©2021 - ©2023 Steelcase Inc. All rights reserved. All specifications subject to change without notice. Trademarks used herein are the property of Steelcase Inc. or of their respective owners. Printed in U.S.A.

Plastic
Seating

| | | | | | |
|---|------|---|------|--|------|
| | | | |  | |
| | | | | Flash | 6334 |
|  | |  | |  | |
| Chili | 6338 | Citron/Tangerine | 6332 | Canary | 5U28 |
|  | |  | |  | |
| Scarlet | 5U24 | Saffron | 6BD7 | Honey | 6BD5 |
|  | | | |  | |
| Merlot | 6BD4 | | | Gold | 6BC8 |

Plastic
Seating

| | | | | | |
|---|------|---|------|---|------|
|  | |  | |  | |
| Wasabi Too | 5U26 | Sea Salt | 6BE6 | Baltic | 6302 |
|  | |  | |  | |
| Wasabi | 6335 | Picasso | 6333 | Jazz | 6336 |
|  | |  | | | |
| Olivine | 6BE5 | Blue Jay | 5U23 | | |
|  | |  | |  | |
| Light Peacock | 6BE2 | Lagoon | 6BD6 | Concord | 5U27 |
|  | |  | |  | |
| Peacock | 6BD2 | Royal Blue | 5U22 | Purple | 6BC2 |
|  | |  | |  | |
| Jungle | 6BD3 | Blue | 6BC5 | Aubergine | 6BD1 |

Plastic
Seating

| | | | | | |
|---|--|--|--|--|--|
| | |  | |  | |
| | | Snow | | Arctic White | |
| | | 6BD8 | | 6009 | |
|  | |  | |  | |
| Sand | | Element | | Seagull | |
| | | 6654 | | 6337 | |
|  | | | |  | |
| Malt | | | | Platinum Solid | |
| | | 5U25 | | 6249 | |
|  | |  | |  | |
| Ore | | Near Black | | Sterling Dark Solid | |
| | | 6BE1 | | 6295 | |
|  | |  | |  | |
| Carbon Flat | | Midnight | | Merle | |
| | | 6BD9 | | 6527 | |
| | |  | | | |
| | | Black | | 6205 | |

Plastic
Systems

| | | | | | |
|---|--|---|--|---|--|
|  | |  | |  | |
| White | | Milk | | Arctic White | |
| | | 6618 | | 6052 | |
|  | |  | |  | |
| Warm White | | Mist | | Seagull | |
| | | 6655 | | 6053 | |
|  | |  | |  | |
| Sand | | Fog | | Platinum Solid | |
| | | 6654 | | 6249 | |
|  | | | |  | |
| Fieldstone | | | | Sterling Dark Solid | |
| | | 6698 | | 6059 | |
| | |  | |  | |
| | | Midnight | | Merle | |
| | | 6259 | | 6527 | |
| | |  | | | |
| | | Black | | 6000 | |

Plastic
Seating

| | Americas Finish Code | Europe, Middle East and Africa Finish Code | Asia Pacific Finish Code |
|---------------------|-------------------------|--|-----------------------------|
| Arctic White | 6009 | WM | 6009 |
| Aubergine | 6BD1 | 6BD1 | 6BD1 |
| Baltic | 6302 | – | – |
| Black | 6205 | 05/6205 | 6205 |
| Blue | 6BC5 | – | – |
| Blue Jay | 5U23 | 5U23 | 5U23 |
| Canary | 5U28 | 5U28 | 5U28 |
| Carbon Flat | 6BD9 | 6BD9 | – |
| Citron/Tangerine | 6332 | 38 | – |
| Chili | 6338 | 09/6332 | 6332 |
| Concord | 5U27 | 5U27 | 5U27 |
| Element | 6337 | – | – |
| Flash | 6334 | 6334 | – |
| Gold | 6BC8 | – | – |
| Honey | 6BD5 | 6BD5 | 6BD5 |
| Jazz | 6336 | 36 | 6336 |
| Jungle | 6BD3 | 6BD3 | 6BD3 |
| Lagoon | 6BD6 | 6BD6 | 6BD6 |
| Light Peacock | 6BE2 | – | – |
| Malt | 5U25 | 5U25 | 5U25 |
| Merle | 6527 | MG/6295 | 6527 |
| Merlot | 6BD4 | 6BD4 | 6BD4 |
| Midnight | 6259 | – | – |
| Near Black | 6295 | 6295 | 6295 |
| Ore | 6BE1 | 6BE1 | – |
| Olivine | 6BE5 | – | – |
| Peacock | 6BD2 | 6BD2 | 6BD2 |
| Picasso | 6333 | B9 | 6333 |
| Platinum Solid | 6249 | PM/6249 | 6249 |
| Purple | 6BC2 | 6BC2 | – |
| Royal Blue | 5U22 | 5U22 | 5U22 |
| Saffron | 6BD7 | 6BD7 | 6BD7 |
| Sand | 6654 | – | – |
| Scarlet | 5U24 | 5U24 | 5U24 |
| Sea Salt | 6BE6 | – | – |
| Seagull | 6053 | B7 | 6053 |
| Snow | 6BD8 | 6BD8 | – |
| Sterling Dark Solid | 6059 | 59 | – |
| Wasabi | 6335 | VP | 6335 |
| Wasabi Too | 5U26 | 5U26 | 5U26 |

Plastic
Systems

| | Americas Finish Code | Europe, Middle East and Africa Finish Code | Asia Pacific Finish Code |
|---------------------|-------------------------|--|-----------------------------|
| Arctic White | 6009 | WM | 6009 |
| Black | 6000 | – | – |
| Fieldstone | 6698 | – | – |
| Fog | 6697 | – | – |
| Merle | 6527 | MG/6527 | 6527 |
| Midnight | 6695 | – | – |
| Milk | 6052 | – | – |
| Mist | 6636 | – | – |
| Platinum Solid | 6249 | PM/6249 | 6249 |
| Sand | 6654 | – | – |
| Seagull | 6053 | B7 | 6053 |
| Sterling Dark Solid | 6059 | 59 | – |
| Warm White | 6655 | – | – |
| White | 6618 | – | – |

Seating + Systems Cross Reference

| | Seating Code | Systems Code |
|---------------------|-----------------|-----------------|
| Arctic White | 6009 | 6009 |
| Black | 6205 | 6000 |
| Merle | 6527 | 6527 |
| Midnight | 6259 | 6695 |
| Platinum Solid | 6249 | 6249 |
| Sand | 6654 | 6654 |
| Seagull | 6053 | 6053 |
| Sterling Dark Solid | 6059 | 6059 |

Due to the constantly evolving dynamics of information pertaining to disinfecting and protecting against bacteria and viruses, please refer to <https://www.steelcase.com/cleaning-steelcase-products/> for the most up-to-date resources.

Paint

Make a statement or blend products into an environment with our range of paint colors. To ensure a balanced and complete offering, we've considered color family, value, range, neutrality and global trends.

Disclaimer

Materials are digitally printed for reference and may vary from final product. Please refer to a physical sample for actual color and detail.

Item #23-0000025 04/23 ©2021 - ©2023 Steelcase Inc. All rights reserved. All specifications subject to change without notice. Trademarks used herein are the property of Steelcase Inc. or of their respective owners. Printed in U.S.A.

Paint



Sandstone 4CL7 PG3



Rose Quartz 1ATG PG3



Chili 4AY2 PG3



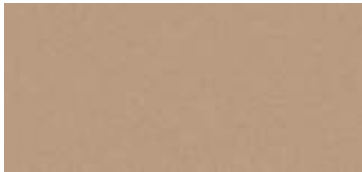
Citron 4AX1 PG3



Honey 4CZ5 PG3



Matte Copper 4B25 PG3



Matte Brass 4B22 PG3



Terra 4CL6 PG3



Sea Glass 4CL4 PG3



Ice Blue 4CL2 PG3



Aura 4CL3 PG3



Light Matcha 4CL5 PG3



Blue Jay 4AV3 PG3



Marlin 4AZ5 PG3



Dark Olivine 4CL1 PG3



Lagoon 4CZ6 PG3



Smokey Plum 4CL8 PG3



Baltic 4AV4 PG3

Paint



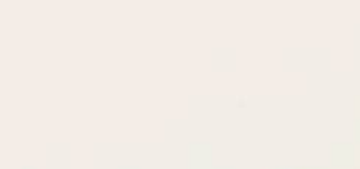
Milk 4242 PG1



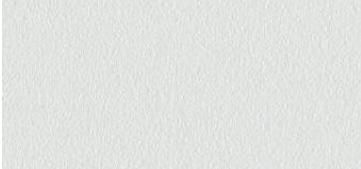
Vapor 4849 PG1



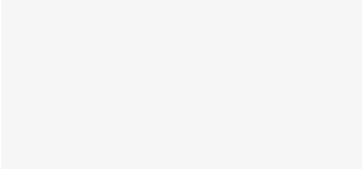
Seagull 7243 PG1



Linen 4843 PG1



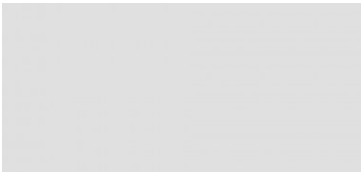
Arctic White 7241 PG1



Seagull 4858 PG1



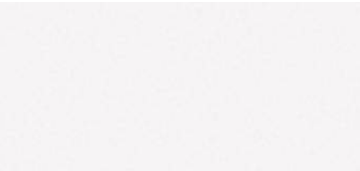
Warm White 4700 PG2



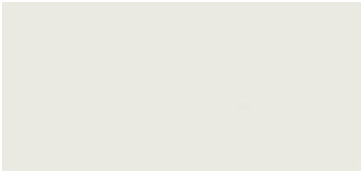
Arctic White Gloss 4140 PG2



Platinum Metallic 4799 PG2



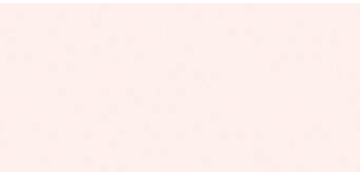
Chalk 4240 PG1



Glacier 4844 PG1



Platinum Solid 7190 PG1



Clay 4239 PG1



Champagne Metallic 4750 PG2



Slate 7237 PG1



Sterling Dark Solid 7250 PG1



Sand 7225 PG1



Merle 7360 PG1



Fieldstone 7238 PG1



Obsidian 4B20 PG3



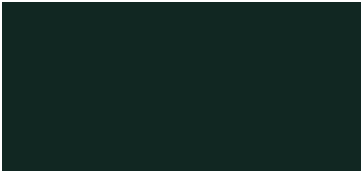
Burnished Bronze 4B23 PG3



Black 7207 PG1



Mocha 4238 PG1



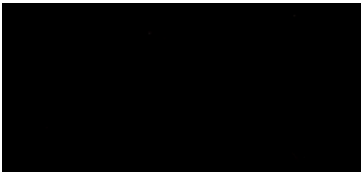
Low Gloss Black 4710 PG1



Smoked Mica 4B26 PG3



Cast Shadow 1ATT PG3



Black 0835 PG2



Cast Iron 4B29 PG3



Night Bronze 4B24 PG3



Black Gloss 4144 PG2



Near Black Metallic 4803 PG2

Paint

Standard Surfaces

Price Group 1

| | Americas Finish Code | Europe, Middle East and Africa Finish Code | Asia Pacific Finish Code |
|---------------------------|-------------------------|--|-----------------------------|
| Smooth Paint | | | |
| Chalk | 4240 | – | – |
| Clay | 4239 | – | – |
| Low Gloss Black | 4710 | – | – |
| Milk | 4242 | – | – |
| Mocha | 4238 | – | – |
| Textured Paint | | | |
| Arctic White | 7241 | WM | 7241 |
| Black | 7207 | PB | BK/7207 |
| Fieldstone | 7238 | – | – |
| Merle | 7360 | MG | 7360 |
| Sand | 7225 | – | – |
| Seagull | 7243 | – | – |
| Slate | 7237 | – | – |
| Sterling Dark Solid | 7250 | 7250/DS | 7250 |
| Architectural Paint | | | |
| Glacier | 4844 | – | – |
| Linen | 4843 | – | – |
| Platinum Solid (Textured) | 7190 | – | – |
| Seagull | 4858 | – | – |
| Vapor | 4849 | – | – |

Standard Surfaces

Price Group 2

| | Americas Finish Code | Europe, Middle East and Africa Finish Code | Asia Pacific Finish Code |
|-----------------------|-------------------------|--|-----------------------------|
| Smooth Paint | | | |
| Arctic White Gloss | 4140 | WG | 4140 |
| Black | 0835 | – | – |
| Black Gloss | 4144 | – | – |
| Warm White | 4700 | – | – |
| Smooth Metallic Paint | | | |
| Champagne Metallic | 4750 | CH | 4750 |
| Near Black Metallic | 4803 | NM | – |
| Platinum Metallic | 4799 | SL | SL/4799 |

Paint

Select Surfaces

Price Group 3

| | Americas Finish Code | Europe, Middle East and Africa Finish Code | Asia Pacific Finish Code |
|------------------|-------------------------|--|-----------------------------|
| Accent Paint | | | |
| Aura | 4CL3 | – | – |
| Baltic | 4AV4 | – | – |
| Blue Jay | 4AV3 | 4AV3/V3 | 4AV3 |
| Chili | 4AY2 | – | – |
| Citron | 4AX1 | 4AX1/Q7 | 4AX1 |
| Dark Olivine | 4CL1 | – | – |
| Honey | 4CZ5 | 4CZ5 | 4CZ5 |
| Ice Blue | 4CL2 | – | – |
| Lagoon | 4CZ6 | 4CZ6 | 4CZ6 |
| Light Matcha | 4CL5 | – | – |
| Marlin | 4AZ5 | – | – |
| Rose Quartz | 1ATG | 1ATG | 1ATG |
| Sandstone | 4CL7 | – | – |
| Sea Glass | 4CL4 | – | – |
| Smokey Plum | 4CL8 | – | – |
| Terra | 4CL6 | – | – |
| Coatings | | | |
| Cast Shadow | 1ATT | – | – |
| Lux Coatings | | | |
| Burnished Bronze | 4B23 | 4B23 | 4B23 |
| Cast Iron | 4B29 | – | – |
| Matte Brass | 4B22 | 4B22 | 4B22 |
| Matte Copper | 4B25 | 4B25 | 4B25 |
| Night Bronze | 4B24 | 4B24 | 4B24 |
| Obsidian | 4B20 | 4B20 | 4B20 |
| Smoked Mica | 4B26 | – | – |

Due to the constantly evolving dynamics of information pertaining to disinfecting and protecting against bacteria and viruses, please refer to <https://www.steelcase.com/cleaning-steelcase-products/> for the most up-to-date resources.

